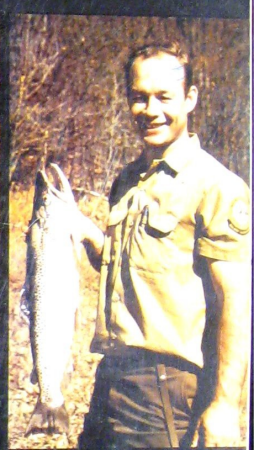
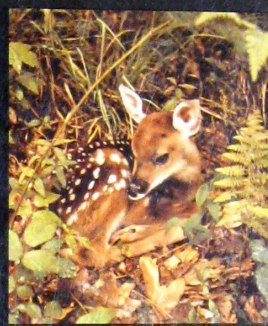


BRADFORD
pennsylvania

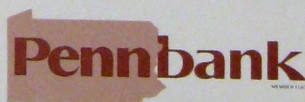


Let us help plan your future in **Bradford**

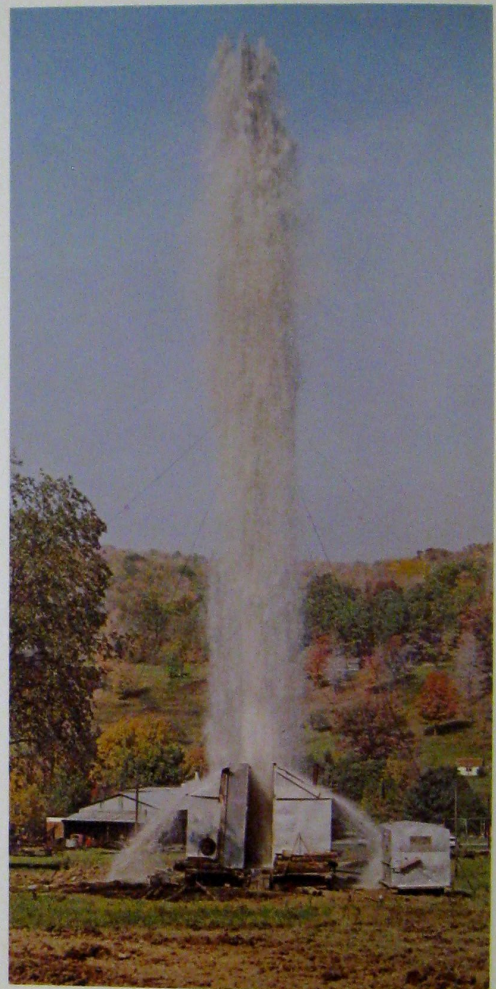
We're proud of our area — its resources, its natural beauty, its progressive spirit and the friendliness of its people. And we're especially proud of the people associated with Pennbank. They're warm, helpful professional people, well equipped to aid you in your plans, whether for your home, your business or your family's future.

You'll find Pennbank people waiting to serve you in three Bradford offices. We hope they'll be some of your first new neighbors you'll meet.

One of the largest and strongest banks in this area, you can also find 24 Pennbank offices throughout Northwestern Pennsylvania.



The Pennsylvania Bank and Trust Company





Pleasant Living

A message from the Bradford Area Chamber of Commerce:

Americans have always been fascinated by bigness. For most of our 200 year history it has been a general assumption that "bigger is better." In recent years, though, we have learned that this belief has its drawbacks. Sprawling urban development has created problems more rapidly than solutions have become available. Crowding has resulted not only in the physical inconveniences of traffic jams, pollu-

tion and lost privacy but also in rising crime rates and loss of identity which have far reaching social implications.

A city like Bradford, Pennsylvania, presents options which more and more Americans are giving serious thought to — living space in a primarily natural environment, a community of sufficient size to maintain services and institutions of high quality, yet stable enough to man-

age development and solve its problems.

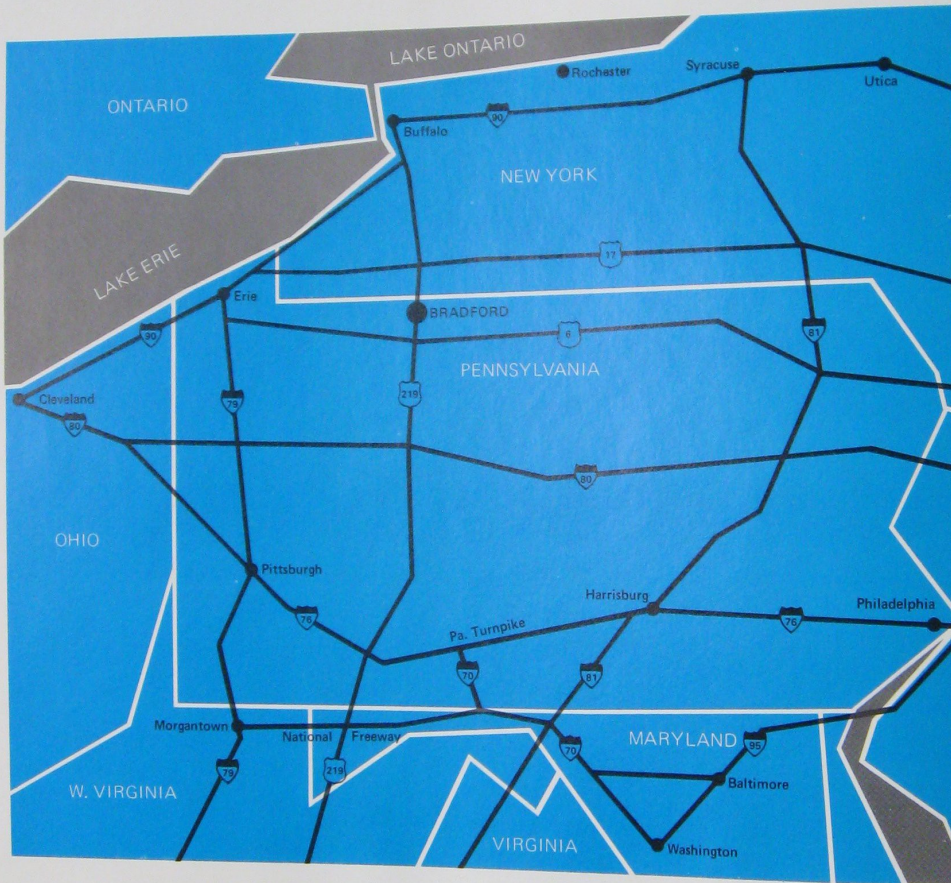
Bradford offers these options. It is a pleasant community in magnificent natural surroundings. Its schools, health services and other public facilities are excellent. It is a progressive community dedicated to making the most of the resources at hand and sustained growth at a rate that is manageable yet sufficient to maintain its economic

vitality. Bradford is an energetic city with a large number of its citizens actively giving of their time and substance for community improvement.

The Bradford Area Chamber of Commerce is proud to present this sketch of our city and invites you to come and share in the good life.



BRADFORD
pennsylvania



BRADFORD
pennsylvania

Allegheny Environment



Bradford is situated in the valley of Tunungwant Creek framed by the majestic hills of the Allegheny Mountains in Northwestern Pennsylvania. It is the major population center of McKean County which is bordered by New York State on the north, Warren County on the west, Elk and Cameron Counties on the south and Potter County on the east.

The city covers an area of 3.2 square miles and has a population of about 13,000. The surrounding political subdivisions of Bradford and Foster Townships and Lewis Run Borough bring the area's population total to about 25,000. The population of McKean County is 52,000.

Geographically the area was in pre-glacial times the bed of an enormous inland lake. The city's elevation is 1,443 feet above sea level.

Bradford's climate is moderate. Average temperatures range from 28 degrees F. in January to 71 degrees in July. Residents enjoy four distinct seasons ranging from brisk winters to warm sunny summers.



Bradford, Pa. 1881

In the second decade of the nineteenth century sporadic settlement began along the valley of Tunungwant Creek in Northwestern Pennsylvania.

Followers of the belief then current that the best way to get on in life was to move on drifted into the area from southern New York State and New England. Their cabins were surrounded by endless tracts of virgin timber and the waterway whose Indian name meant crooked creek, wound its way eventually to the Allegheny River, a water highway to the major markets on the Mississippi. Possessing a commodity much in demand and a way to get it to market, small settlements like Tuna, Tarport and Foster Brook were soon engaged in the lumber business.

The area's potential came to the attention of the United States Land Improvement Co. of Boston, whose agent, Col. L. C. Little, arrived in 1837 and bought up 16,000 acres for about six cents per acre and christened his purchase Littleton.

The settlement gradually took on the appearance of a community

with schools, churches and mills. In 1854, Little died and the settlement was renamed Bradford. The Buffalo, Rochester and Pittsburgh Railway introduced easier transportation through the Allegheny Mountains in the 1850's; however, Bradford was to doze on as a quiet timber town for two more decades.

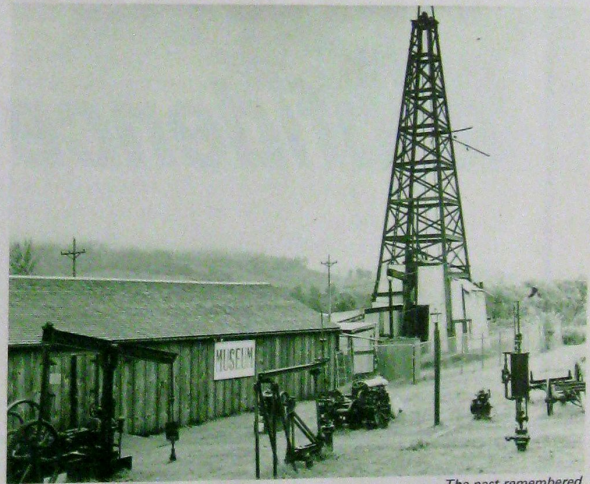
The epidemic of oil fever which broke out after Drake's well came in at Titusville in 1859 spread to Bradford, but early efforts with crude shallow drilling rigs were disappointing.

By the mid 1870's drilling techniques had been improved and the deep oil deposits in the Bradford Field were tapped. It was the nation's largest petroleum find to date and Bradford soon became known as the "High Grade Oil Metropolis of the World." In 1876 there were 376 wells which produced 380,000 barrels of crude oil. Seven years later 18 million barrels of crude oil were flowing from some 3,000 wells.

The city's population mushroomed. When it was incorporated as a borough in 1873, Bradford had 500

residents. By the end of the decade its population had risen to 10,000.

Oil had transformed Bradford from a quiet hamlet into a thriving city. To sustain and build upon this legacy the city turned to the work of diversifying its economy. New industries were introduced and Bradford progressed at a steady rate.



The past remembered.

Drive with
KENDALL®
confidence



KENDALL REFINING COMPANY Division of Witco Chemical Corp. Bradford, Penna. 16701

Constructive Leadership



City Hall

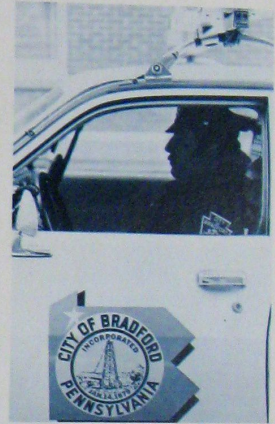
City government plays a principal role in marshalling Bradford's resources to provide needed services and in providing the leadership in meeting community challenges.

Operating on an annual budget of about \$1.7 million, the city has a paid police department numbering 22 full-time employees; a 28-man paid fire department working out of two stations, an excellent water system supplied by spring-fed reservoirs, secondary sewage disposal facilities rated at five million gallons per day, and backyard garbage pick-up.

The city's parks department maintains eight neighborhood parks and one large city park. The city carries out a program of planned recreational activities.

Bradford is a third class city administered by the council-manager form of government. An elected council charts the city's course while day to day administration is handled by a city manager.

City government and its planning commission are integrally involved in the sweeping redevelopment



projects undertaken in Bradford.

The city also cooperates with the governments of surrounding municipalities in programs of mutual interest such as the Bradford Flood Control project and the area's animal shelter.

McKean County government is administered by three county commissioners from the county seat at Smethport 20 miles east of Bradford.

Commercial Center

As the major population center in McKean County, Bradford's commercial district serves residents in outlying districts as well as the city. Shoppers can select from a wide range of quality merchandise in downtown shops or the Bradford Mall.

The mall covers an area in excess of 200,000 square feet with parking for 1,200 cars. City operated parking lots accommodate 250 cars and on-street metered parking puts the shopper just steps away from his or her destination.

Several hotels and motels provide overnight accommodations and there are a number of good restaurants.

Bradford has two commercial banks with deposits totaling nearly \$70 million and assets of more than \$75 million; there are also two savings and loan associations with deposits of about \$1.9 million.



Downtown



BRADFORD
pennsylvania

The Sporting Life

Opportunities for pursuing favorite recreational pastimes abound in the Bradford Area.

Bradford is adjacent to the Allegheny National Forest with its campgrounds, hiking trails, scenic overlooks and miles of hunting ground for deer and small game. Excellent fishing is to be found in the miles and miles of streams winding through the area.

The Allegheny Reservoir, a 27 mile long lake formed by the Kinzua Dam, is only a few minutes drive from Bradford. Developments along the shore provide places for swimming, camping, picnicking, and boat launching.



Kinzua Dam

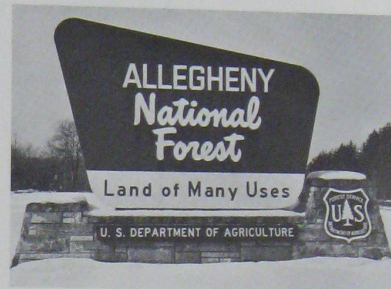
Hiking, camping and swimming are also to be found in Allegheny State Park north of Bradford.

The city maintains Callahan Park, a 32-acre area developed with baseball diamonds, tennis and basketball courts, swimming pool, ice skating rink and a ski slope. There are, also, eight neighborhood parks and playgrounds outfitted with swings, slides and other play equip-

ment.

There are two fine 18 hole golf courses in the immediate area, with several others only a short drive away.

Several commercial ski resorts are located close by, and woodland trails become ideal for cross country skiing after the snow begins to fall.





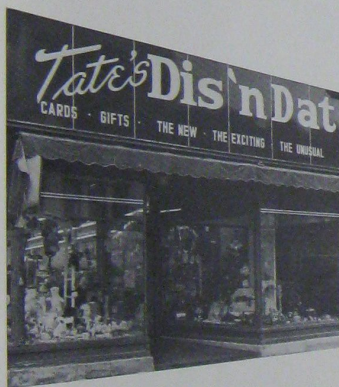
Five reasons why you'll like Bradford

All five stores welcome you to our community with an invitation to meet us and make new friends. We've been Bradford people all our lives and hope you'll find Bradford like home to you, too.

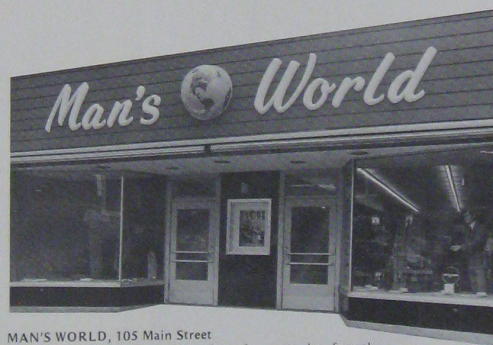


S. K. TATE FURS, 98 Main Street
If you don't know Furs,
know your Furrier.

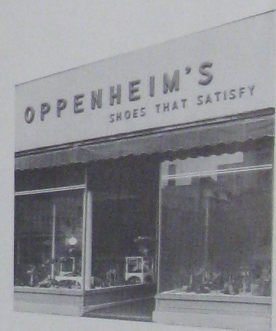
TATE'S FASHIONLAND, 96 Main Street
Finest in Feminine Fashions.



TATE'S DIS 'N DAT, 79 Main Street
The new, the unusual, the exciting in cards and gifts.



MAN'S WORLD, 105 Main Street
Contemporary mens wear from casual to formal,
well-known brand name apparel.



OPPENHEIM SHOE STORE, 81 Main Street
Shoes that satisfy, for the entire family.

We Care

Bradford Hospital is rapidly becoming the central element of a comprehensive health care delivery system for the Bradford area. The hospital's traditional role as an acute care institution has been expanded in recent years to include increasing outpatient services, nursing home facilities and office space for physicians. Bradford Hospital is a 176-bed, private non-profit institution accredited

by the Joint Commission on Accreditation of Hospitals as well as state and federal health programs. Hospital facilities provide the full scope of services usually found in a community hospital. These include: operating and delivery rooms, a nursery, an outpatient and emergency room providing 24-hour-a-day service, a ten-bed intensive and coronary care unit, laboratory, anesthesiology,

radiology, nuclear medicine, physical therapy, respiratory therapy, and EKG and EEG departments.

Patients are served by a medical staff of qualified physicians practicing such specialties as obstetrics and gynecology, pediatrics, psychiatry, radiology, urology, pathology, general medicine, anesthesiology, surgery, internal medicine, ophthalmology and otolaryngology, as well as

area dentists that participate as members of the staff. The nursing staff of registered and licensed practical nurses and nurses aides and orderlies, provide complete patient care services. As part of its program of continuing education for the professional staff, the hospital participates in the Telephone Lecture Network of Western New York and the Network for Continuing Medical Education.



BRADFORD
pennsylvania



Outpatient service areas were expanded through a \$1.4 million building program in 1974. Two floors of this addition are designated for future expansion.

The Bradford Nursing Pavilion, a 95-bed skilled nursing facility for long term care patients, completed in 1975, is adjacent to and administered by the hospital. It is served by a 60 member staff.

The Bradford Medical Arts Building (formerly the Hamsher House), adjacent to the hospital, is being developed as a physicians' office building. The building will eventually house offices for at least 10 doctors. The hospital is constantly involved in a physician recruitment program to increase the medical and health care services available to the community.

A major renovation program up-

Intensive/coronary care unit.



Radiology (x-ray) special procedures.

Emergency Department.

dating the facilities and services, such as improved outpatient and laboratory services, will be accomplished during 1977-78.

Located adjacent to the hospital are selected health services such as Mental Health/Mental Retardation programs, state public health clinics and local offices of national health associations.

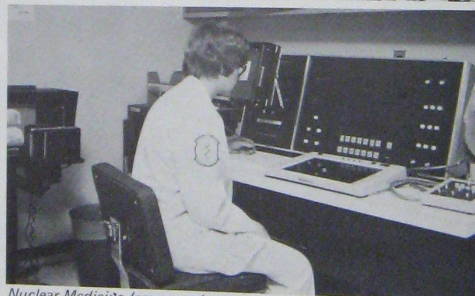
Ambulance service for the Bradford area is provided by the City Fire Department and volunteer services in the related municipalities.



Outpatient urology department.



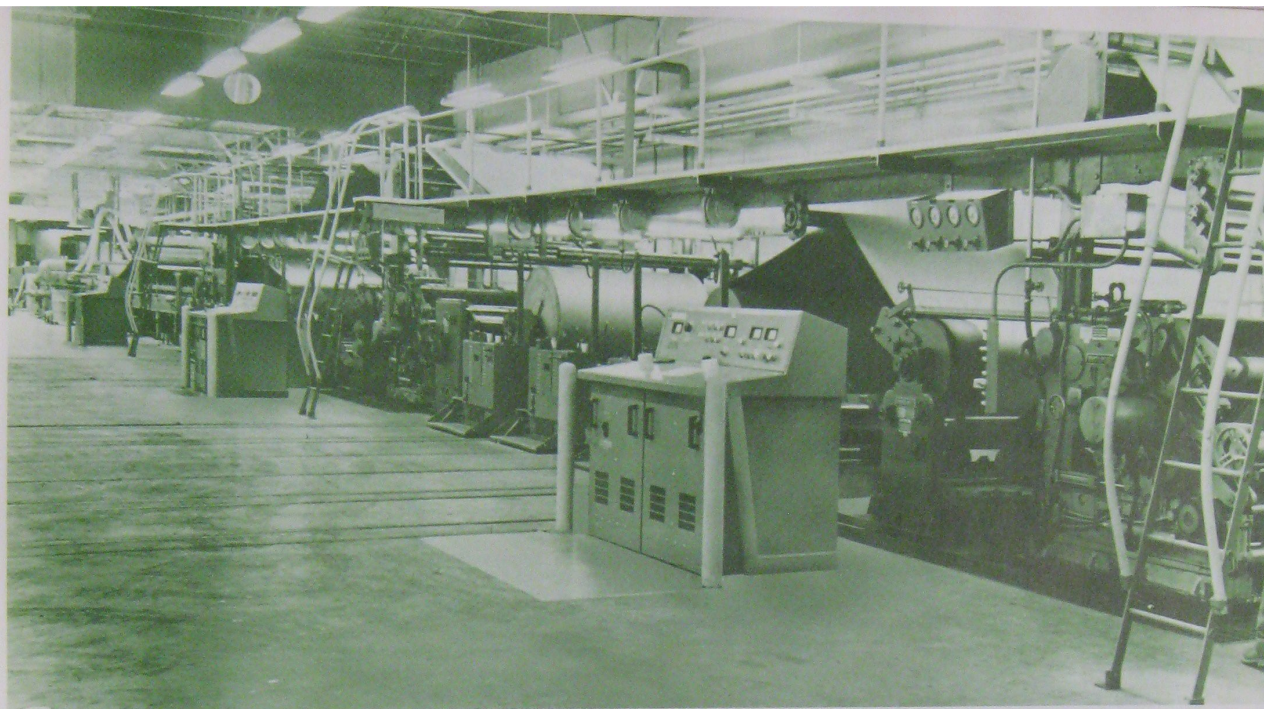
*Bradford Medical Arts Building
(physician's offices).*



Nuclear Medicine (computerized gamma camera).

Clinical Laboratory (automated blood chemistries).

BRADFORD
pennsylvania



OWENS-ILLINOIS

Forest Products Division
One Owens Way
Bradford, Pa. 16701
368-3115

We're glad to be in Bradford!

Great people. Fine industrial neighbors. A feeling of pride in the community. It all adds up to why O-I is glad to be in Bradford, serving the corrugated packaging needs of our customers.

Heart of the Owens-Illinois box plant is this high-speed corrugator, a block-long machine that combines medium and liner board to produce corrugated board.

We Work Hard To Make Your Money Work Harder

In the past 100 years, we have become one of the major stock brokerage and investment banking firms in Pennsylvania.

Our brokerage activities include the full scope of listed securities, options, over-the-counter markets, mutual funds and insurance; as well as new issues, municipal bonds and research.

Our investment banking capabilities comprise complete corporate finance and employee benefits program services.

May we be of assistance to you? Please call Sean Fensel at 362-4681.



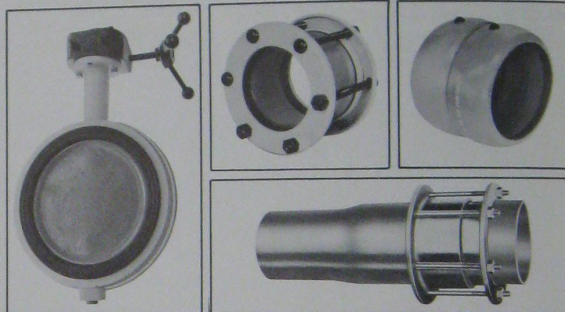
**MOORE,
LEONARD &
LYNCH,**
INCORPORATED

Hooker-Fulton Building, Bradford, PA 16701

Member: New York Stock Exchange, Inc. and Other Principal Exchanges

Offices in: Pittsburgh, Altoona, Beaver, Bradford, Butler, Clarion, Corry, Erie, Greensburg, Indiana, Ligonier, Monroeville, New Kensington, Sharon, State College, PA; Conneaut, East Liverpool, OH; New York, NY.

Dresser and Bradford



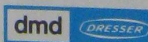
Dresser began in Bradford with the invention of the first pipe coupling by Solomon R. Dresser in 1891. Today, Dresser Industries, Inc. has become a diversified multinational corporation which provides high technology products and services to energy and industrial markets.

In Bradford, we still manufacture pipe couplings and fittings, and have expanded our product line to include over 5000 types and sizes of joining and repair devices and valves for steel, cast iron, plastic, asbestos cement and other piping. We've expanded our facilities in Bradford, too. With the construction of the largest, best equipped

laboratory/plant combination in the United States, Dresser has made the commitment to provide the best protective coatings available for the company's complete line of valves and piping specialties.

We're still growing. Dresser Industries has become known worldwide as a major supplier to the oil and gas industry, as a producer of gasoline pumps and auto hoists, refractories, valves and instruments, cranes and hoists, air and hand tools and pumping and compression systems.

Last year our sales topped \$2 billion and it all started in Bradford.



DRESSER MANUFACTURING DIVISION
DRESSER INDUSTRIES INC.
Bradford, Pennsylvania 16701

"Strike it rich with Lloyd-Smith"

- Complete water well testing and development services
- Full inventory of oil well, industrial and water well supplies



LLOYD-SMITH COMPANY,
INCORPORATED
18 S. Bradford, Pa.
Kendall Ave. 16701
Phone 368-3162

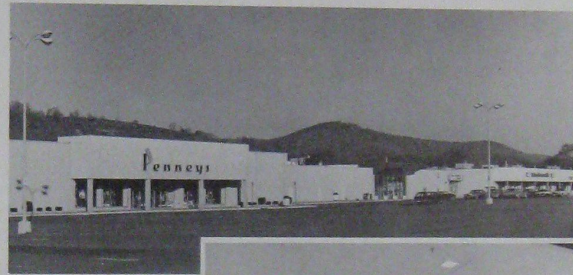




...Where Shopping is a Pleasure

Shop all seven days of the week in the fully-enclosed, climate-controlled comfort of Bradford Mall: open 10 to 9 Monday thru Thursday, 10 to 10 Friday and Saturday and Sunday from noon to 5. There's free parking for 1600 cars.

Route 219, North Bradford



Chock full of good things
from Bradford's finest businesses.

Bavarian Pretzel
Charming Shoppes
Dante's Restaurant/Cocktail Lounge
Fuoco Jewelers
Gallencamp Shoes
The Game Room
J & S Pizza
Jo-Ann Fabric Shops
Mall Dry Cleaners
Mr. Kent's
Northwest Savings
Omar's Music Shop

Paperback Bookland
Penn Bank
Picture Barn
J. C. Penney Co.
Radio Shack
Rea & Derrick Drugs
Royce Shoes
Rontina's Hallmark
Sandra's Fashion Boutique
Sears
Singer
Woolworths

Made in Bradford

History has inseparably linked Bradford and oil, but younger generations are more apt to think of Bradford in terms of the famous name products manufactured here. Bradford's industrial community is composed of a number of strong stable companies whose products include electronic components, machinery, pipe fittings and valves,

cutlery, cigarette lighters, glass, paper products, bricks, wood and petroleum products.

Bradford is home to 36 manufacturing establishments employing about 4,600 workers. There are five companies employing more than 600 each.

McKean County remains the state's leading oil producer, and timber

resources continue to supply manufacturers of furniture, baseball bats, and wood-resin composites.

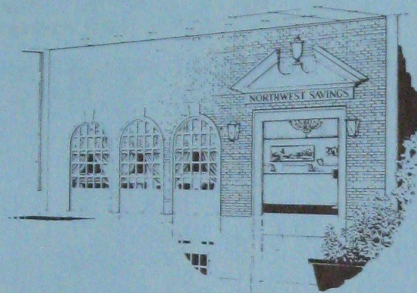
New and expanding businesses are assisted by the Bradford Area Chamber of Commerce and the McKean County Industrial Development Authority. Among the incentives for new industry is a recently completed industrial park, a 200-

acre site near the Bradford Regional Airport in Lafayette Township. The industrial park is equipped with access roads, water, sewer lines and an on-site sewage treatment plant.

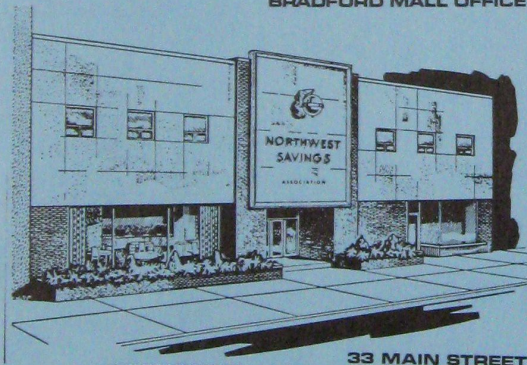




BRADFORD
pennsylvania



BRADFORD MALL OFFICE



33 MAIN STREET

Northwest Savings Association, originally the Bradford Building & Loan Association, opened its doors to the business community of Bradford in 1896. In the years of growth that followed, the Association has opened modern offices at 33 Main Street and the convenient branch office in the Bradford Mall. These offices form the hub of a radiating network of offices that serves five counties of northwestern Pennsylvania.

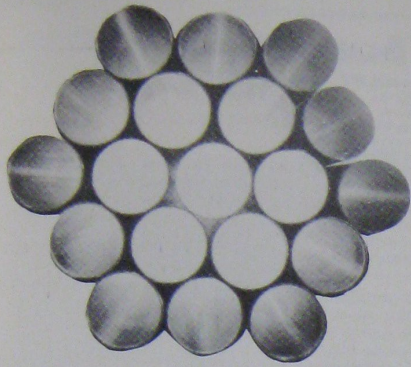
Throughout the years, the people of the Bradford area enjoyed Northwest's friendly, efficient service and the knowledge that their savings were always earning the highest possible rate of interest available in the area and those savings were insured by the Federal Savings and Loan Insurance Corporation.

Northwest Savings is also Bradford's home-financing center. Whether you are interested in buying, building, or improving a home, you will find it well worth your time to stop in and take advantage of our experienced staff of professional loan officers who will be happy to counsel you on property locations, construction costs, and other local housing market conditions.

We at Northwest Savings are proud to serve all the savings and home-financing needs of the community of Bradford.

NORTHWEST SAVINGS
ESTABLISHED 1896





Manufacturers &
Suppliers of
Stainless Steel
Tubing, Fittings
& Accessory
Items to the
Dairy
Food
&
Beverage
Industries

TOP LINE

Eastern Division:
P.O. BOX 264, BRADFORD, PA. 16701
PLANT - ROUTE 219, LEWIS RUN, PA.
TELEPHONE: 814/362-4626
TWX 510 695-5220



GOODMAN BROTHERS INC.

286 High St. • P.O. Box 176 • Bradford, Pa. 16701 • (814) 362-5593

We have the best and most complete
oil and water well pipe supplies
and equipment. Serving the oil and
water well trade since 1945.

Also scrap salvage and auto crusher.



MEMBER
NATIONAL ASSN.
OF STEEL PIPE
DISTRIBUTORS, INC.

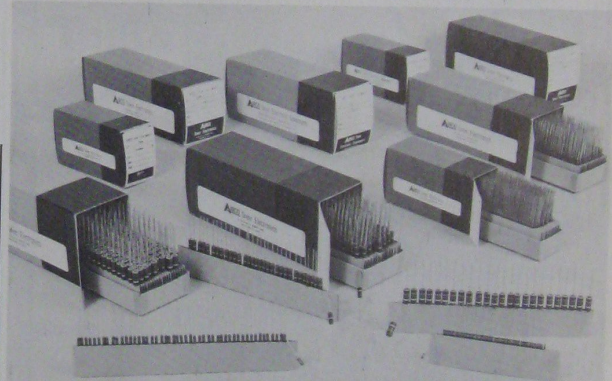


**AIRCO Speer
Electronics**

BOX 547, FOSTER BROOK RD.,
BRADFORD, PA. 16701
814/362-5536

Airco Speer Electronics is a frontrunner in the electronics industry with its pledge to quality, service and reliability in production and distribution of electronic components. We maintain our position of leadership by using the most modern techniques for manufacturing control, to the satisfaction of our customers in businesses ranging from electronic communications to computers.

Close to 800 customers are served from Bradford, home of our main warehouse and distribution center. Airco Speer also makes Bradford its divisional headquarters.



QUALITY · SERVICE · RELIABILITY

TWENTY-THREE

HANLEY Company

ESTABLISHED 1933



28 Kennedy St., Bradford, Pa. 16701
814/368-3151

The Hanley Company is proud of the fact that it has been part of the growth and development of the Bradford area for over 80 years.

For the best dairy products,
ask for . . .

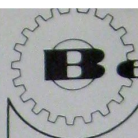
Bradco
DAIRY PRODUCTS

BRADFORD MILK CO., INC.
44 State St., Bradford, Pa. 16701



AT YOUR DOOR
•
AT YOUR STORE

CALL
814/368-4136



YOUR CATERPILLAR DEALER

Beckwith

MACHINERY COMPANY
PITTSBURGH, PA. SOMERSET, PA.
BRADFORD, PA. ERIE, PA.
CLEARFIELD, PA. CLARKSBURG, W.VA.
Service Center Altoona, Pa.

Beckwith Machinery Company is one of the oldest and largest dealers for Caterpillar Tractor Co. in the United States. Since 1907, we have dedicated every facility to seeing that customers get what they want, when they want it, where they want it.

Today Beckwith furnishes equipment, parts and service in Bradford and all of western Pennsylvania. We provide engineering counsel on the proper use of equipment for individual earthmoving and material handling projects. In addition, highly trained mechanics and field servicemen make immediate repairs either at job sites or in our shops.

All these services are provided to key industries including road construction, site development, mining, logging, pipeline, public utilities, industrial plants and municipal, county and state governmental bodies. In addition to our Bradford facility, services are available at Pittsburgh, Erie, Altoona, Somerset, Clearfield, Pennsylvania and in Clarksburg, West Virginia.

We are confident that the industries serving the Bradford area will continue to grow and we pledge to continue offering the finest machinery, parts and service available.

James R. Evans Company

80 Main St.
Bradford, Pa. 16701
368-4916



We Like Lookers . . .

And what's more, lookers like us. Especially good lookers. Bradford's best-dressed recognize a special distinction and style in our fashions for men, women and boys. Discover it for yourself. Come visit us. We'll be looking for you.

tate

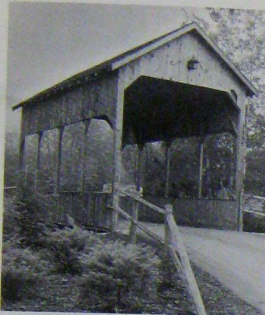
construction co.

Sleepy Hollow Dr. Bradford, Pa. 16701
Phone 368-3323

First with the Finest
Homes with Distinction

developers of

Sleepy Hollow



Through this portal pass the inhabitants of Bradford's newest and most impressive residential community, Sleepy Hollow. This is the gate to luxurious living amid the calm and peaceful surroundings of nature.

Set within this rural atmosphere are homes distinctively designed, built with the highest degree of craftsmanship, and made to order for the buyer who wants the best home for the best value.

Before seeing any other, you must visit with Tate Construction Co.

Anywhere in Bradford, contact us for your construction job — residential or commercial.

"Reed's is not only a store, it's also an experience!"

The Reed's Jewelers experience is multi-dimensional: known for distinction and superior quality in our selection of watches, precious gems and sterling silver; respected for complete, dependable appraisals and jewelry repair service; admired for our customized engraving, ring designs and settings.

We earnestly believe that our customers deserve nothing but the very best.

REED'S JEWELERS

72 Main St. (cor. Chestnut St.),
Bradford, Pa. 16701 814/368-3302



Area's Favorite
Jewelers

FORD

We
rent or lease
new Fords

FAIRWAY FORD

472 E. Main Street

- CARS & TRUCKS (All Models)
- SERVICE • PARTS
- A-1 USED CARS
- COMPLETE AUTO BODY SHOP

368-7166

Togi's Old Barn

109 Main St.
Bradford, Pa.
Phone 368-9727



- The Choice of Connoisseurs
- Chosen by people with discriminating tastes for fine dining and cocktails
- Luncheon and dinner selections

Joining Together

A large number of clubs and organizations are active in channeling the energies of their members in programs and projects of community improvement and providing opportunities for fellowship and sharing interests.

They include local affiliates of national service and fraternal organizations, as well as one of a kind organizations bringing together people with common interests in hobbies and other activities.

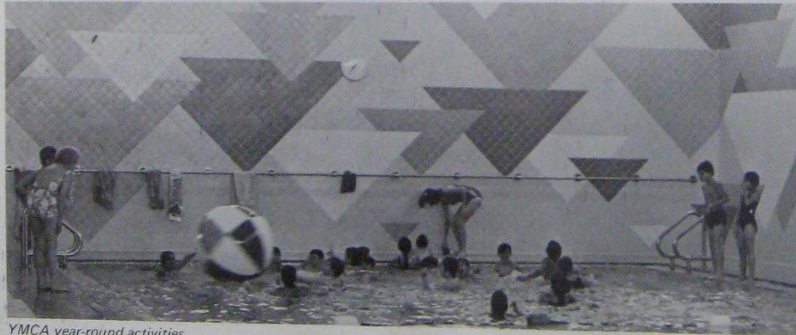
Among the most active are the YMCA and YWCA. The YMCA, housed in a million dollar facility,

recreational and educational programs. Its facilities include a swimming pool, gymnasium, handball and squash courts, exercise rooms and sauna bath. It sponsors classes in yoga, bridge, arts and crafts and offers instruction in skiing, golf and tennis.

In addition to club activities for its members, the YWCA operates a number of social programs valuable to the community. Among these are a nursing program, a day care center, a transitional living program for former mental patients, and an employment service for young people.



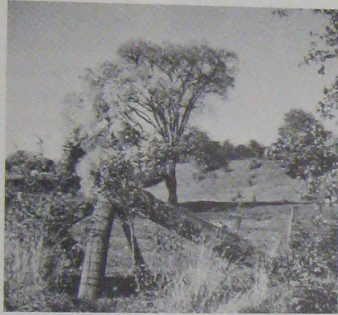
Community improvement.



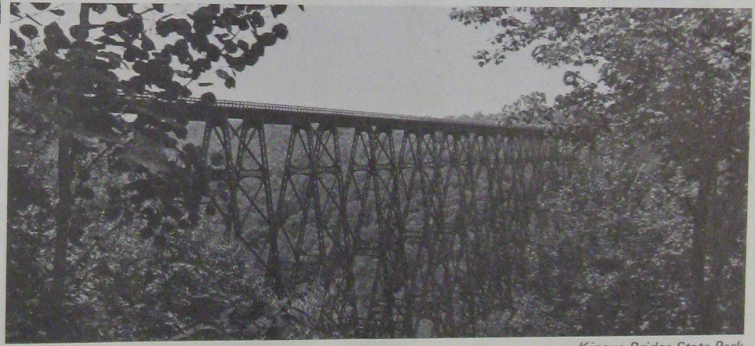
YMCA year-round activities

BRADFORD
pennsylvania

Winter mantle.



BRADFORD
pennsylvania



Kinzua Bridge State Park

First Federal Savings & Loan Association

15 Main St. Bradford, Pa. 16701 362-3544



First Federal puts money to work for people, primarily through home loans and with savings plans, Christmas Clubs, money orders and travelers checks.

The money you save with us today will tomorrow help a neighbor finance a home, room addition or other project. We take pride in the fact that we are helping to build a better Bradford area.

Learning



Fine public and parochial schools, university training and continuing education programs are key elements in the extensive educational opportunities Bradford makes available to its citizens.

Primary and secondary public school training is provided by the Bradford Area School District which serves an area of about 200 square miles including Bradford City, Lewis Run Borough and Bradford, Foster, Lafayette and Corydon Townships.

The district has an enrollment of about 4,800 students in 13 elementary schools, a facility for trainable children, two junior high schools and one senior high school. The elementary school buildings are distributed throughout the district with six in Bradford City, four in Foster Township, two in Bradford Township and one in Lafayette Township. Secondary schools are located in the city.

In the 1960's a new junior high school was built and a second expanded. The high school also underwent renovation and a new auditorium, gymnasium and vocational wing were added. A \$400,000 storage and maintenance facility for the district's fleet of 35 buses was built in 1971.

The school program concentrates on the total development of the student and is designed to enable the individual to qualify for the highest possible levels of formal education and to achieve to the maximum of his ability.

The elementary curriculum includes use of the AAAS elementary science program.

A modern language program begins in the seventh grade.

Bradford Area High School, which is accredited by the Middle States Association, offers four basic courses of study — academic, business, vocational and general.

To enrich high school English and Social Science programs, students are offered a series of elective mini courses. Among the selections are local and state history, economics, geography, sociology, anthropology, creative writing, journalism, religious literature and the women's movement.

The vocational education program offers courses of study in 12 fields, ranging from auto mechanics, electronics, and machine shop to oil field production and building and grounds maintenance. Students in the program divide their time between academic classes and vocational subjects. Work study programs are carried out with the cooperation of local businesses and industry.

School rooms are well equipped with the necessary tools for class

and independent study. Broad use is made of television and the district has a highly rated audio visual department.

The district operates programs for the mentally retarded trainable and educable and works with Futures Rehabilitation Inc., a sheltered workshop, involving these students.

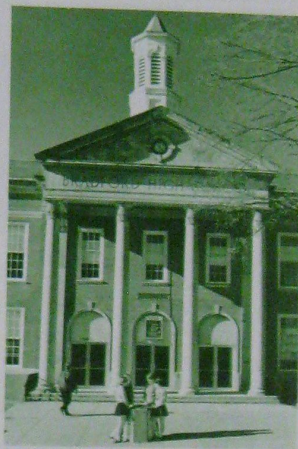
Classes for the learning disabled, and the socially and emotionally disturbed are provided.

A program for the gifted and talented has been established.

In cooperation with the University of Pittsburgh, advanced students may take courses at the Bradford Campus.

The district's faculty and professional staff exceeds 300. Although there is variation from class to class, the teacher-pupil ratio overall is among the best in northwestern Pennsylvania.

An adult education program is set up to offer courses in almost any area where interest is sufficient to warrant it. Among popular classes are courses in vocational and



BRADFORD
pennsylvania

mechanical skills and classes in arts and crafts offered in cooperation with the Bradford Art Center.

Parochial schools offer education in grades one through twelve and include Bradford Central Christian High School operated by the Roman Catholic Diocese of Erie.



University of Pittsburgh at Bradford



A campus of the University of Pittsburgh extends Bradford's educational resources to the university level and makes available to the area the expertise of an academic community. UPB offers programs leading to masters, baccalaureate and 2 year degrees.

UPB first opened its doors in 1963. Among the early buildings were a

Lecture classes are small enough to be personal at UPB.



former downtown hotel, a nursing school and a hardware store. Now operations have moved to a new 125 acre campus on the site of a former airport. Educational facilities include an academic building and a natural science-engineering complex. Nine residence halls with the capacity to house 450 students

were added. An athletic complex was completed in 1977, including a gymnasium, indoor courts for tennis and other games, training rooms and two auxiliary gyms, as well as outdoor athletic facilities for basketball, baseball, softball, football, soccer, handball and tennis. A common facilities build-

ing will house a cafeteria, game room, infirmary, campus radio station and student affairs, housing and student government offices. The physical plant has a value of about \$10 million.

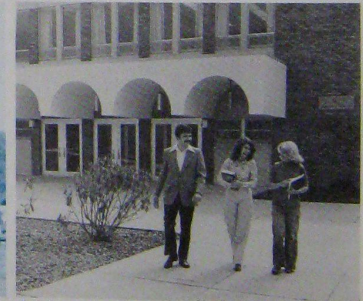
Enrollment at UPB is in excess of 800 and is expected to reach 1,000 full time students by 1980. Another 500 to 700 are involved in non-credit continuing education courses.

The campus offers four-year bachelor degree programs — English Literature and Culture, American Studies, Human Relations, Community Development and Analysis, Physical Science and Administrative Science.



Partial campus view shows Swarts Hall (left), Fisher Hall (right), with glimpses of resident halls.

THIRTY



A friendly atmosphere prevails on the UPB Campus.

Students at UPB may also fulfill initial requirements in a number of other University programs — the first two years of study in the College of Arts and Sciences and the School of Engineering, the first two and one-half terms in the School of Nursing, the first four terms in the School of Education and the School of Social Work, the first two terms in the School of Pharmacy and the first four terms in health related professions such as physical therapy, medical technology, child development and child care.

An associate degree program in Petroleum Engineering Technology is the only one of its kind in the eastern United States. There is also a two-year certificate program in data processing.

The continuing education program is a valuable asset to the non-student population of the community offering courses for physicians, dentists, pharmacists, businessmen and other professionals and sponsoring informal classes for individuals in a number of areas of interest.

UPB also offers a Masters Degree

No. 32 scores often for UPB, an emerging power in Region III of the National J. C. Athletic Association.



program in teacher education and courses required for teacher certification.

The school's athletic program includes intramural sports in which every student is encouraged to participate as well as intercollegiate varsity competition.

UPB has also served to strengthen and expand many community cultural programs.



Women's sports now on the rise at UPB.



Townhouse style and garden style apartments provide a popular new living concept for UPB students.

BRADFORD
pennsylvania

Tuna
 Service First — Quality Always
MANUFACTURING COMPANY
 Since 1895
 70 Mechanic St. Bradford, Pa. 16701
 Phone 814/368-6156



Home improvements
 •
 Lumber
 •
 Paints
 •
 Builders supplies
 •
 General contracting

SAL'S FOOD MART AND RESTAURANT

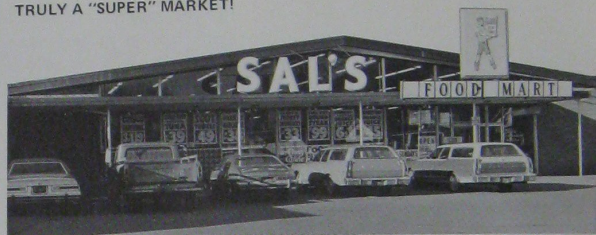
99-101 Barbour St. Ph. 368-9911

- Groceries
- Salads and sandwiches
- Six pack beer carry out

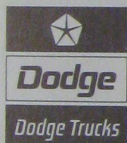
Food Mart hours:
 9 a.m. to 12 midnight, Mon. thru Sat.
 Sunday 9 a.m. to 9 p.m.
 Open 7 days a week

Restaurant hours:
 9 a.m. to 11 p.m. Mon. thru Sat.
 Sunday 1 to 8 p.m.

TRULY A "SUPER" MARKET!



IN THE HEART OF KINZUA COUNTRY



PHILIP C. BAUSCHARD

170 Seaward Ave., Bradford, Pa. 16701 362-5541

Your dependability people in Bradford have been here since 1946 providing sales, service and parts for the full line of Dodge cars and trucks. Dodge: you can depend on it — and us — at Philip C. Bauschard.

DODGE
 DEPEND
 ON IT



The Bradford Era

Established in 1877, The Bradford Era serves Bradford and the region with a daily news and picture report noted for its completeness and accuracy. The Era has more circulation than that of all other McKean County papers combined. Proud of its century-long tradition and of the Bradford area, The Era looks forward to the progressive future of this dynamic region.

43 Main Street Telephone: 814/368-3173

WESB

1490 on your AM radio dial

The pioneer radio voice of McKean County, Radio Station WESB, established in 1947, serves the area with diversified programming, highlighted by area and world news, sports, music and features. Winner of many awards for complete news and sports coverage, WESB has long been known for its play-by-play reports of regional scholastic and collegiate games.

Bradford, Pa. Telephone: 814/368-4141

America's best selling motor oil.



The Quaker State Oil Refining Corporation refines and markets America's best selling motor oil. Made from Pennsylvania Grade crude oil, quality Quaker State Motor Oil has been helping motorists keep their cars running young for over 60 years.

Bradford has played an essential role in Quaker State's success. It's the home of one of the corporation's three production districts; and it's only a short distance from one of Quaker State's four refineries. Area residents are Quaker State employees; and local, independent producers supply the firm with Pennsylvania Grade crude oil.

A hometown friend **PRODUCERS BANK**

EFFICIENT — PROFESSIONAL — MODERN



50 MAIN STREET		368-3103
587 SOUTH AVENUE		
671 EAST MAIN STREET		
SMETHPORT		887-5522

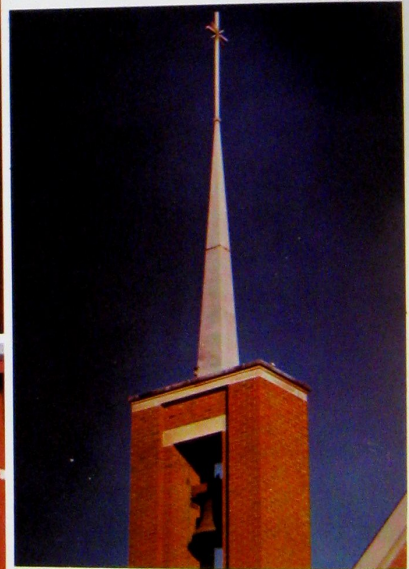
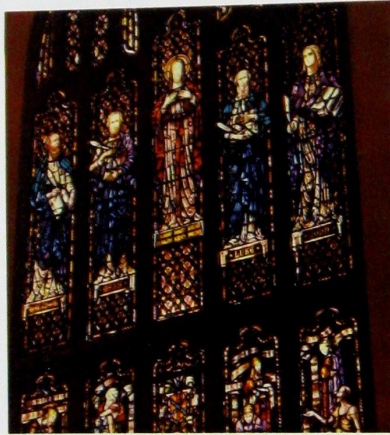
FULL SERVICE BANKING FOR OVER 50 YEARS

Worship

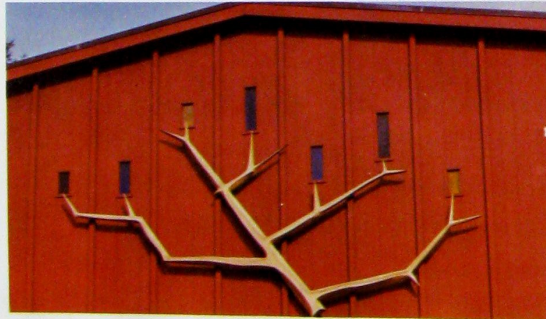
In its earliest days Bradford's religious needs were served by circuit riding preachers who braved the wilderness to make intermittent visits. As the settlement grew, churches were among the first structures to be erected.

Sharing the same strong religious convictions of their forefathers, the residents of Bradford today worship in 36 Protestant and three Catholic churches and a synagogue.

Working in concert through the Association of Churches and on an individual basis, the churches of Bradford are deeply involved in programs of community service.



BRADFORD
pennsylvania





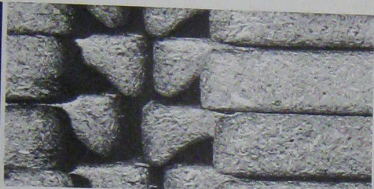
plex-O-wood, INC.

40 HOLLEY AVE.

Through our revolutionary process,
we restructure wood to give
it added strength and versatility.

WORLD WIDE **Werzalit** MEMBER

FROM
TIMBER
TO MOULDED
HARDWOOD
PRODUCTS



ince 1911



The one name
for both
real estate
and
insurance
service.

Sundahl & Co.

113 Main St., Bradford, Pa. 16701 • 368-3139 • Branch offices in Mt. Jewett and Kane.



East Main Street Wall and Sidewalk Reconstruction Project.

BRADFORD
pennsylvania

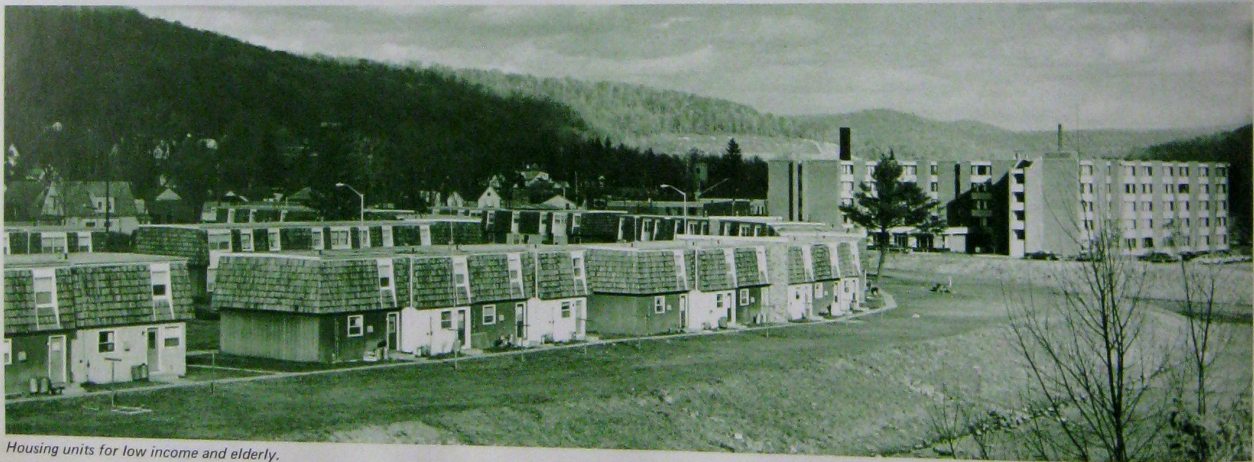
Building for the Future



The activities of the Bradford Redevelopment Authority are an outstanding example of the city's dedication to progress through improvement of community resources. Working with the city council and the planning commission, the authority has identified areas of need and directed its energies toward renewal projects which have resulted in substantial new housing construction, commercial development, and residential rehabilitation.

Bradford has enjoyed tremendous success in garnering the federal and state funds needed to bring about major change and is one of the leading cities in Pennsylvania in terms of monies received per capita for renewal projects. In its 20-year history the authority has procured more than \$9 million in federal assistance and more than \$1.5 million in state grants. Significant financing has also come from local funding.

In the 1960's the authority was involved principally in assembling and clearing plots of land for major housing and commercial developments. A 129 unit high-rise apartment complex for the elderly and a 72 unit low income housing development was created in a project valued at \$4.3 million. An \$800,000 housing project created 50 units of housing for moderate income families. The Bradford Kiwanis Club acted as the non-



Housing units for low income and elderly.

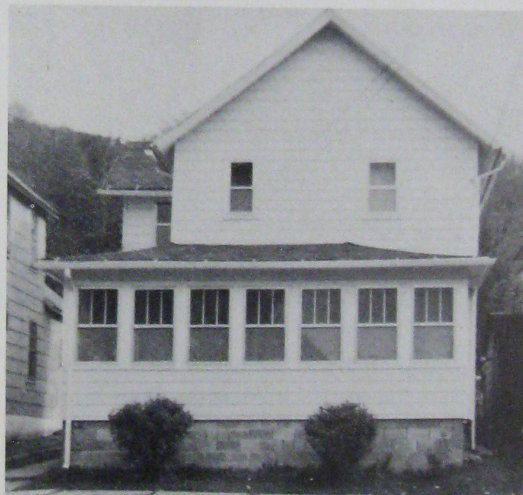


Grove Street Playground.

profit sponsor for this project. Two commercial district projects replaced blighted areas with a motel, a supermarket, restaurant and several stores. The redevelopment authority was also instrumental in acquiring and developing the land for athletic facilities at the Bradford Campus of the University of Pittsburgh.

In the 1970's the authority's emphasis was shifted to neighborhood conservation projects involving spot clearing of individual substandard buildings, residential rehabilitation and the upgrading of utilities, streets and sidewalks.

The city received a \$1.3 million community development block grant in 1975, and the authority,



One of many rehabilitated homes.

Downtown commercial development.



designated as the city's community development agency, undertook a comprehensive rehabilitation project in the Fifth Ward. In the first year of this project, 127 structures were rehabilitated at a cost of \$545,000, and \$700,000 was spent for site improvements. By the time

of completion, it is estimated some \$3 million will have been spent to improve this neighborhood.

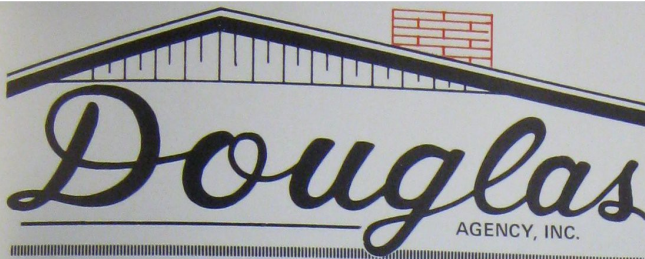
Similar projects are under way in the Euclid Avenue area where \$167,000 has been spent for site development and Willard Avenue where expenditures have been ear-

marked for rehabilitation, spot demolition and site improvements. Also in progress is the Northgate Subdivision . . . a 16 acre development which when completed will provide building lots for 63 houses and a recreational area.

In the mid 1970's redevelopment

authority projects have resulted in an annual investment of about \$1.6 million in revitalizing Bradford's neighborhoods.

BRADFORD
pennsylvania



REAL ESTATE

" THE ROOF THAT COVERS ALL "

Acreage	Homes	
	Farms	Commercial
	Lots	
	Camps	

Integrity and honesty—these are two key words in our approach to real estate. Over 29 years experience, an expert staff and many satisfied customers attest to that claim. From start to finish, including expertise in arranging real estate financing, DOUGLAS AGENCY, INC. is the logical choice for BUYERS and SELLERS.

WITH FOUR OFFICES TO SERVE YOU BETTER!

39 Bolivar Dr.
Bradford, Pa. 16701
814/362-4538

E. State & Dugan Rd.
Olean, N.Y.
716/372-3400

Duke Center, Pa.
814/966-3737

Eldred, Pa.
814/225-4656



**the road
to quality color**

Photo by: Will Champlin

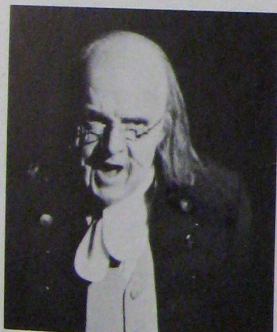
Bradford Printing and Graphics
142 W. Washington St., Bradford, Pa. 16701

The Lively Arts

Bradford is proud of its flourishing cultural life.

From September through March, the Bradford Area Artist Series presents on a regular basis programs by musical performers, film classics, lectures and dramas.

The series, sponsored by the University of Pittsburgh at Bradford, the Bradford Civic Music Association and the Sisterhood of Temple Beth El brings to Bradford top flight musical artists, dance troupes and orchestras — and some of the nation's leading newsmakers making the rounds of the lecture cir-



Drama

cuit. Augmenting the headliners are lectures by University faculty, musical programs featuring local talent such as the Bradford Choral Society and presentations by the University drama department.

Exchange agreements extend the series to concerts by the Buffalo Philharmonic Orchestra at Jamestown, N.Y. and the concert series at Warren, Pa.

Local artists are encouraged and assisted through the activities of the Bradford Art Center. This group sponsors exhibits, lectures and classes in art appreciation. The art center works with the school district in providing adult education courses at Bradford High School.

For many years, the Seneca Highland Players have been entertaining audiences with spirited amateur dramatic presentation and encouraging local residents to demonstrate their talents for acting, directing and staging.

The library has a 45,000 volume collection of books and subscribes to eight newspapers and 150 periodicals. A complete file of the local



Dance

Music



Carnegie Library



daily newspaper is kept on micro-film. The library also has a special collection of college catalogs and the Hanley Collection, a group of 4,500 volumes on oil. The library lends its patrons phonograph records, films, film strips and pictures as well as books. Additional materials are available through an interlibrary loan system.

A valuable collection of paintings donated by art collector T. E. Hanley is on display at the library.

About 11,000 active library users borrow about 100,000 items annually.

Special services to children include a pre-school story hour sponsored by Friends of the Library, classroom visits to schools, summertime reading and film programs, special displays and reading guidance and reference services.

Friends of the Library also sponsor a book review series.

Library facilities are also available

for group meetings.

The Bradford Landmark Society has been established to preserve items of interest from Bradford's oil boom days. The society's headquarters, located in the second oldest structure in Bradford, houses the organization's collection of artifacts, records and memorabilia.

The society is engaged in recreating an oil field village on the site of Crook Farm where the first high production well in the Bradford

field was located. The original farmhouse dating from the mid 1800's is being restored. A one room school dating from the 1870's has been moved to the farm site and will be preserved as part of the historic village.



Transport and Communications

About 25 per cent of the U.S. population lives within a day's drive of Bradford. The closest major cities are Buffalo, N.Y., 80 miles to the north and Pittsburgh, 165 miles to the south. New York is 250 miles away, Philadelphia, 220 miles, Cleveland, 190 miles and Chicago, 500 miles.

Bradford's principal arterial highway is U.S. Rt. 219 which is being developed as an expressway running from Buffalo to West Virginia. The portion of Rt. 219 in Bradford has

been upgraded to a four lane limited access highway. East-west routes serving the city are interstate 80 through central Pennsylvania and The Southern Tier Expressway (Route 17) just across the state line in New York.

Air service is available through the facilities of Bradford Regional Airport. The airport is equipped with two runways measuring 6,500 and 4,500 ft. and the latest modern aviation aids including high intensity lighting and instrument landing

systems.

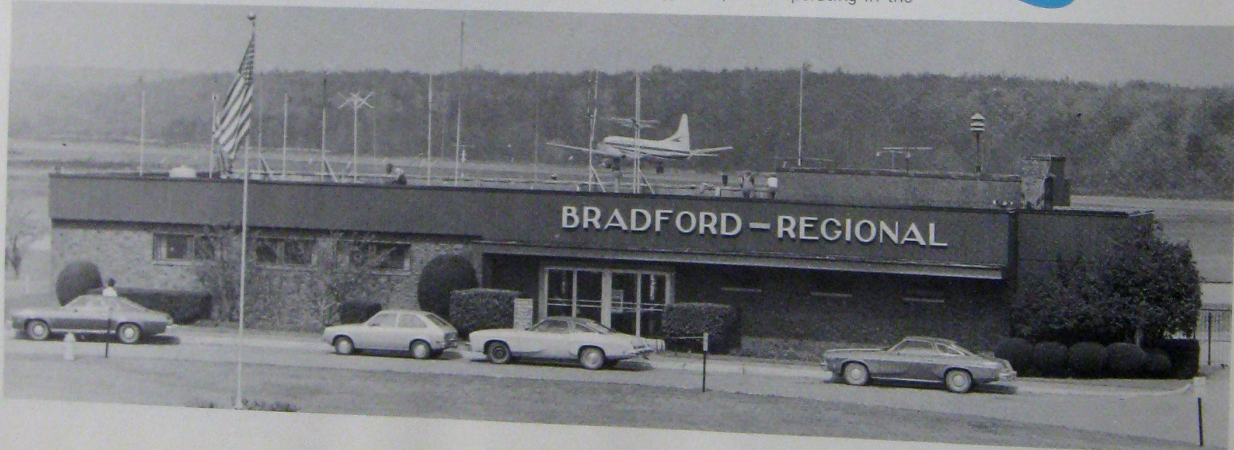
Commercial passenger service is provided by Allegheny Airlines and there are two local operators offering air transport service. The airport handles an average of one million pounds of air freight annually. General aviation facilities are also offered.

Serving overland freight needs are two railroads and eight trucking firms. Three bus companies schedule passenger service.

Energy companies operating in the

area are Pennsylvania Electric Co., National Fuel Gas and Columbia Gas of Pennsylvania.

Communications media include a daily and weekly newspaper and a local radio stations. Cable television offers programming from stations in Erie, Buffalo, New York City, Hamilton, Ont., and the Pennsylvania Public Television Network.



PEOPLE IN PACE WITH PROGRESS

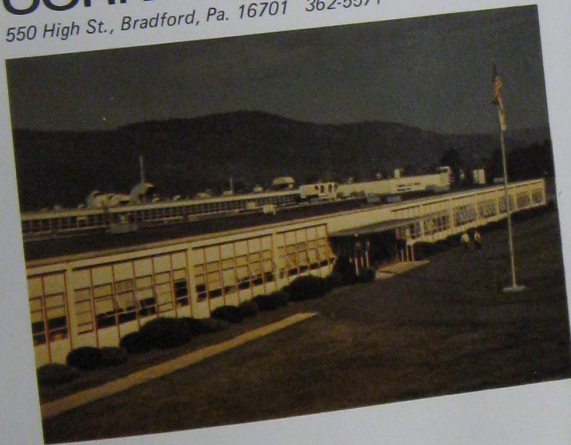
One of man's oldest basic materials is continually being refined to meet new applications for better products in science, industry and the home.

For over a quarter century, the Bradford Plant of Corning has maintained a position of leadership in the production of electronic components for a variety of scientific and consumer applications.

Bradford people and Bradford enthusiasm help keep Corning and the community growing to meet the challenges of our age.

CORNING

550 High St., Bradford, Pa. 16701 362-5571



THE WORLD'S LEADING MANUFACTURER OF COMPOSITE CANS

Our Bradford location is one of 23 production plants across the country. Here in Bradford, the heart of the Pennsylvania oil region, we supply composite motor oil cans to major oil companies.

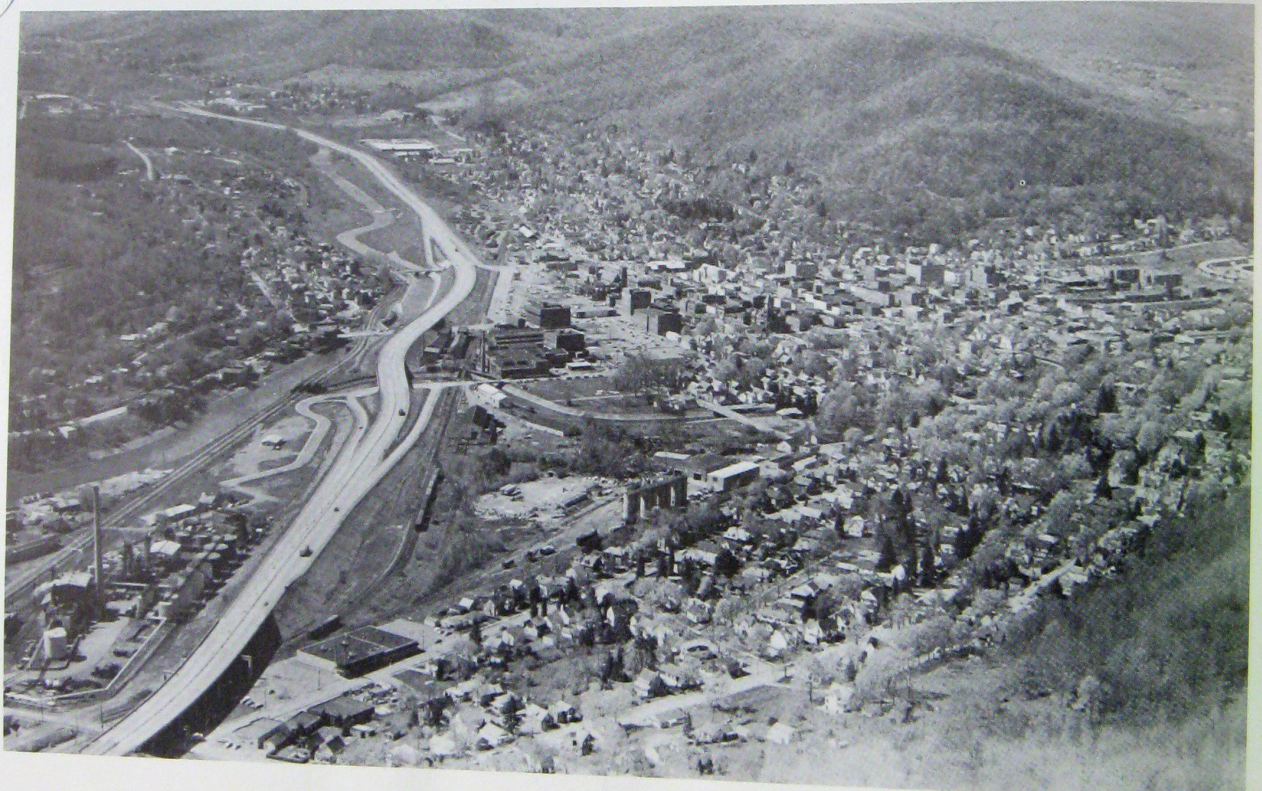
Other major product lines include refrigerated dough, snacks, frozen juice concentrate, powdered beverages, caulk, grease and oil additives.



"WORK WITH THE LEADER"

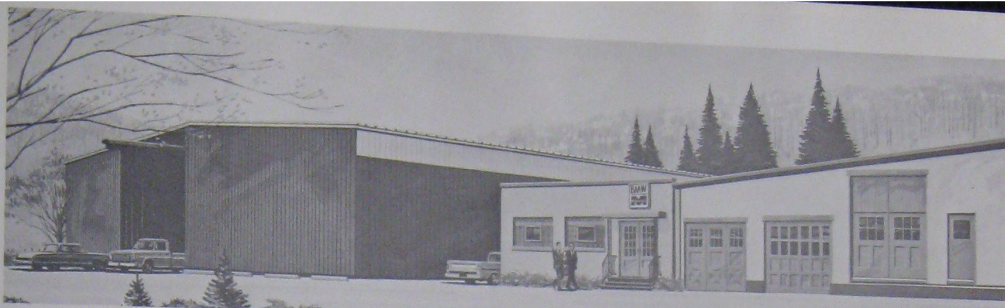
Boise Cascade Composite Can Division

105 BOLIVAR DRIVE, BRADFORD, PA.



FORTY-FOUR

Route 219 Expressway through Bradford



BMW-MONARCH DIVISION OF TRICO INDUSTRIES, INC.
MANUFACTURERS OF OIL WELL PUMPING EQUIPMENT

ADDRESS:

MANUFACTURING: 57 Holley Ave. • Bradford, PA • 368-6191
SALES & SERVICE: 120 Hilton St. • Bradford, PA • 368-7147
CORPORATE OFFICES: 15805 S. Main St. • Gardena, CA 90248

BMW-Monarch, formerly Bradford Motor Works, has been a part of the Bradford manufacturing scene since 1908. BMW-Monarch, one of two major divisions of Trico Industries, an American Stock Exchange Company, employs some 80 people and manufactures over 2,500 different component parts in Bradford for its line of Sub-Surface Sucker Rod Pumps and Well Servicing Tools marketed throughout the United States and the World. In 1973 BMW-Monarch added 15,000 sq. ft. to its facility emphasizing our faith and confidence in the Bradford Community.

the complete and dependable remote control system

Featuring . . . selective range limiting, stepped or full stepless control 27MHz, 72-76MHz, or 450MHz carrier frequencies

Also Manufacturers of - Unitized Crane Magnetic Systems - Fail Safe Anti Collision Devices - and Short Range Remote Control Command Systems.



CONTROL CHIEF CORPORATION

P.O. Box 141

Bradford, Pa. 16701

Tel. (814) 368-4131



(MADE IN U.S.A.)



Pennhills Country Club

Statistics

GEOGRAPHIC:

Bradford is located in northwest Pennsylvania near the New York State line, 79 miles south of Buffalo and 157 miles north of Pittsburgh. Route 219 is the main north-south route through the city.

Altitude:

1443 feet above sea level

Climate:

Average temperature for January is 28° and average July temperature is 71°.

Precipitation:

Average annual 45 inches

POPULATION:

City: 13,000

Metropolitan Area: 25,000

EDUCATION:

Bradford Area School System has one high school, two junior high schools and thirteen elementary schools. The Parochial system has a high school and elementary school.

The University of Pittsburgh at Bradford offers programs leading to masters, baccalaureate and two year degrees.

PUBLIC SAFETY:

Fire and Police Department — Staffed by full-time paid civil service employees.

HEALTH SERVICES:

Bradford Hospital: 223 beds

3 Nursing Homes

UTILITIES:

Electricity — Pennsylvania Electric Company

Natural Gas — United Natural Gas Company & Columbia Gas of Pennsylvania

Telephone — Bell Telephone Company of Pennsylvania

Water — Bradford Water Authority. The city's three reservoirs hold more than a billion gallons of high-quality water.

Sanitation — Bradford Sanitary Authority. A modern two-million-dollar sewage treatment and refuse facility.

TRANSPORTATION:

Railroads:

Baltimore & Ohio

Erie-Lackawanna

Motor Freight: Eight major lines

Bus Lines:

Blue Bird Coach Lines

Edwards Motor Transit, Inc.

Seaway Coach Lines

Airport:

Bradford Regional Airport

This "community image" book was created and produced for the Bradford Area Chamber of Commerce by **TRANTER & DILKS** Public Relations and Advertising Warren, Pennsylvania

Advertisers

Airco Speer Electronics	23	Control Chief Corp.	45	Lloyd-Smith Company Inc.	18	Reed's Jewelers	25
BMW-Monarch	45	Corning	43	Moore, Leonard & Lynch, Inc.	18	Sundahl & Co.	35
Beckwith Machinery Co.	24	Douglas Agency Inc.	39	McKean County Ind. Dev. Council, Inc. .	48	Sal's Food Mart and Restaurant	32
Boise Cascade Corp.	43	Dresser Industries, Inc.	18	Northwest Savings Assn.	22	Tate Construction Co.	25
Bradford Hospital	14	Fairway Ford	25	Owens-Illinois	17	Tate's	13
Bradford Era/WESB Radio	32	First Federal S&L Assn.	28	Pennbank	Inside Front Cover	Togi's Old Barn	25
Bradford Mall	19	Goodman Bros. Inc.	23	Philip C. Bauschard (Dodge)	32	Top Line Corp.	23
Bradford Milk Co. Inc.	24	Hanley Co., Inc.	24	Plex-o-Wood, Inc.	35	Tuna Mfg. Co.	32
Bradford Printing	39	James R. Evans Co.	24	Producers Bank	33	Univ. of Pgh. at Bradford	30
W. R. Case & Sons Cutlery	Back Cover	Kendall Refining Co.	6	Quaker State Oil Ref. Corp.	33	Zippo Mfg. Co.	Inside Back Cover

If your company is considering building a new plant, you will find growing conditions very favorable in the McKean County Industrial Park. Industrial building tracts are now available on a 200 acre site equipped with roads and complete water and sewage facilities.

Our location provides you with quick access to suppliers and customers. Over 25 per cent of the U.S. population and nearly 75 per cent of the nation's industrial buying power will be within 500 miles of your plant. Highway, rail and air transport are all readily available.

Our area enjoys an excellent business climate. There is a good supply of labor and a long history of good industry-labor relations.

A move to the McKean County Industrial Park will put you in good company. The area's industrial community includes some of the nation's outstanding manufacturing companies.

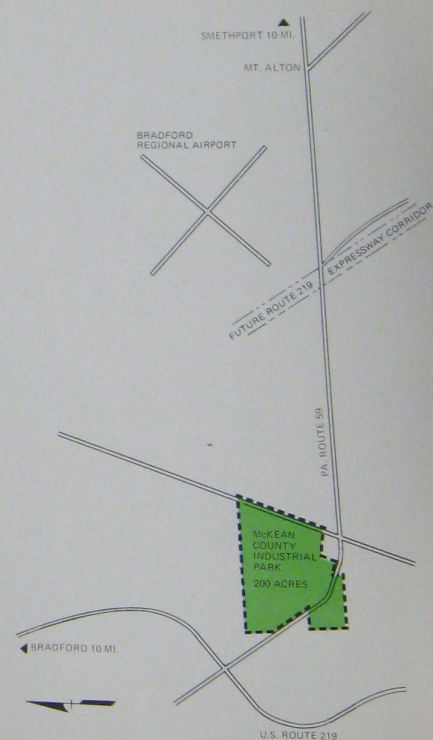
Let us cultivate your interest. Contact: The McKean County Industrial Development Council Inc., 15 Main St., Bradford, Pa. 16701.



McKean County Industrial Development Council Inc.
15 MAIN STREET BRADFORD PA. 16701

**We Cut Down
Some Trees so Your
Plant Could Grow...**

McKean County Industrial Park





Main Office



Congress St. Plant

zippo ... home of the famous windproof lighter

Zippo Manufacturing Co. Bradford, Pa. 16701 In Canada: Zippo Mfg. Co. of Canada, Ltd.



**CASE MAKES KNIVES
LIKE NO OTHER
KNIVES MADE.**



The Quality Knife Makers
W. R. Case & Sons Cutlery Co.
Bradford, Pa. 16701