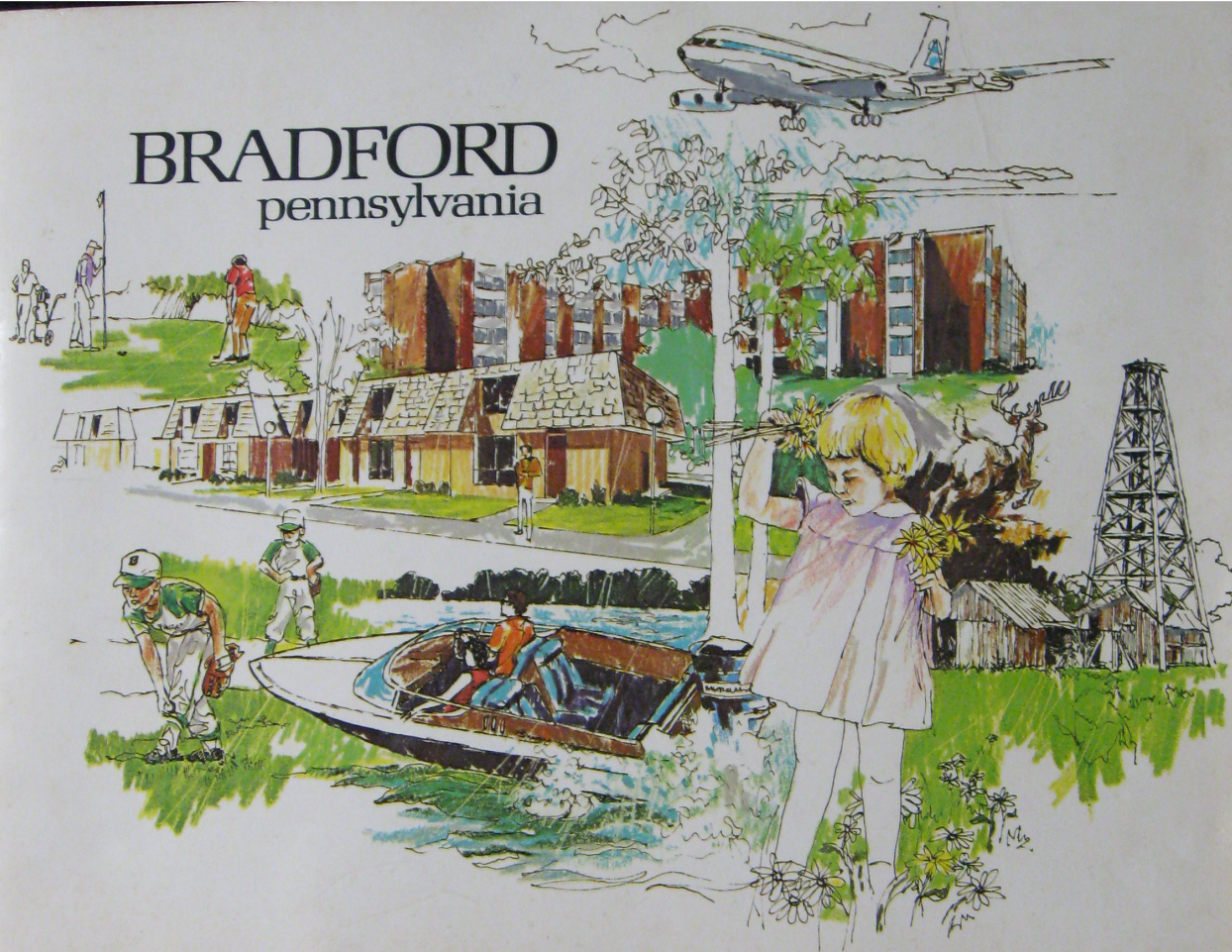
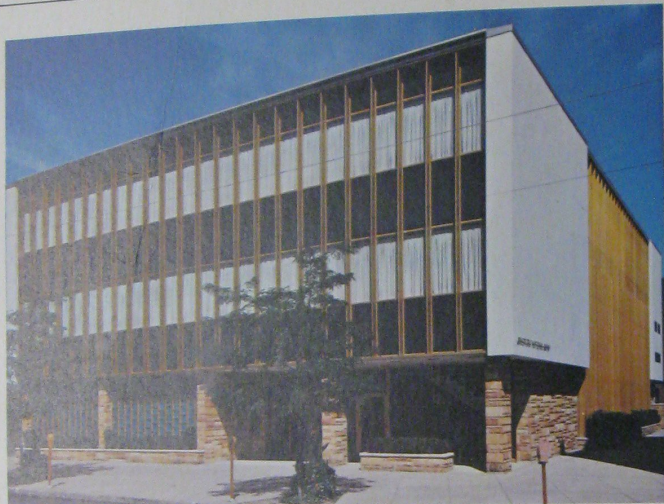


BRADFORD

pennsylvania





Providing full service banking since 1879,
the year Bradford became a city.

Tomorrow's Banking Today

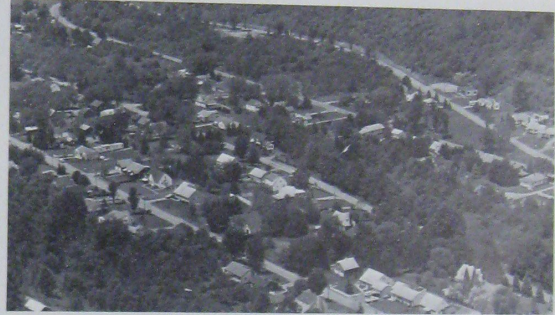


BRADFORD NATIONAL BANK
BRADFORD, PENNSYLVANIA

A message from the Bradford Area Chamber of Commerce



Hub of the Bradford Area.



The Bradford Area Chamber of Commerce invites you to come and enjoy with us the natural beauty of our area and pleasant living in a progressive community.

Through the pages of this book you will feel the pulse of our city . . . a view of the past, and a look into our plans for the future.

Bradford owes its early development to a natural resource-oil; today a well diversified economy provides employment for our people.

Another part of our progress is indicated by the active program of redevelopment and housing started several years ago.

But, the most important asset of any city is its people. Active and interested people are the catalyst that improve and develop a community, and you will find them here in Bradford. The many and varied community activities depicted in this book would not have been possible without the efforts of sincere and dedicated men and women.

We invite you to come and live with us in this happy valley surrounded by wooded hills. Enjoy the clean air and beautiful scenery in this land of pleasant living.

Community Profile



2 *Grandeur of the Allegheny Reservoir.*

Bradford lies amid the rolling tree covered Allegheny Mountains in northern McKean County, Pennsylvania, an example of the harmonious possibilities of a thriving commercial center existing in unmatched natural beauty.

The county, named for the second governor of Pennsylvania, is located in the northwestern portion of the state, bordered by New York State on the north, Warren County on the west, Elk and Cameron Counties on the south, and Potter County on the east.

The city of Bradford has a population of 15,000 and the Bradford area which includes, in addition to the city, Bradford and Foster Townships and Lewis Run Borough, has a population estimated at 30,000. The county population is 53,000.

Free of the pressures attendant to the crowding in larger urban centers, Bradford nevertheless is engaged in a progressive program of reordering its resources and priorities to be ready for the contingencies of the future.

One trend which has already indicated direction for the future is the influx of temporary refugees from the cities seeking brief respite in the recreational haven of which Bradford is a natural center

— an easy day's drive for the 50-million persons who live within 350 miles.

The city is located on the north-south U. S. Route 219 which is being turned into a four-lane road to join Buffalo, 80 miles to the north, and Pittsburgh, 165 miles to the south. Cleveland is 190 miles to the west. East-west routes serving Bradford are Interstate 80 to the south and New York 17 to the north. Scenic Route 6 is the third east-west route servicing the city.

Bradford is built on what was once a floor of a pre-glacial ocean. Its elevation is 1,443 feet above sea level. The climate is moderate (average temperature for January is 28 and for July, 71) and all four seasons have their special appeal.



Skier's view of Bradford City.





Airco Speer Electronics Resistor Plant in Bradford is one of the most sophisticated manufacturing plants for electronic components in the United States. The pride in providing high quality at competitive prices and the pride in providing the best delivery schedules in the industry are the factors that have contributed significantly toward substantial sales growth over the years.

The Bradford plant was constructed in 1951 and has been doubled in size in the last ten years. The Bradford resistors are used in radios, T.V.'s, computers, and electronic equipment over the entire world. Airco Speer, a division of Air Reduction Company, Inc., also manufactures other electronic components and carbon and graphite products at seven other plants located in Pennsylvania, New York, Mexico, and Singapore.



SPEER ELECTRONICS Division of Air Reduction Company Inc.
Bradford, Pennsylvania 16701 Telephone 814/362-5536

A City Built on Black Gold



Penn-Brad Historical Well Park located on Route 219 three miles south of Bradford.

A small party of pioneers from Vermont, seeking good fortune in the year 1823, decided to settle in a valley in the Allegheny Mountains of northwestern Pennsylvania and in so doing marked the spot where their descendants and others who followed their lead would build the city of Bradford.

The first settlers were far more interested in cutting down trees than in putting up cities, and the pine and hardwood forests that blanketed the land determined the development of the area in those early decades.

Through the valley wound a two-branched stream aptly named by the Indians, Tunungwant or Crooked Creek. The white men shortened the name to Tuna which they also gave to the first settlement. Others followed with names such as Foster Brook and Tarport.

The United States Land Improvement Company of Boston sent an agent to the area, Colonel L. C. Little, who purchased 16,000 acres for about six cents per acre in 1837. The area was given the name Littleton.

Gradually the settlement assumed the appearance of permanency with schools, churches and mercantile business to support the main occu-

pation of the lumber mills.

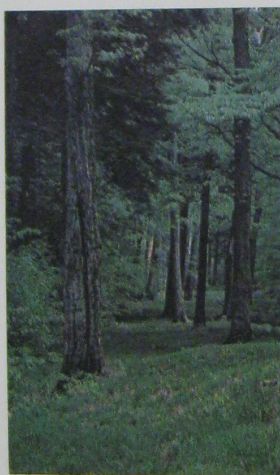
After Little's death in 1854 the name of the settlement was changed to Bradford. The derivation of the name has been lost in antiquity.

Bradford was not located on a main water route and its early development was slowed to the tortuous pace of overland transportation. This was remedied with the coming of the Buffalo, Rochester and Pittsburgh Railroad, organized by Little's successor as agent for the land company.

The presence of a coal deposit at Mt. Alton, to the south, led to speculation in the 1850's that a wealth greater than the trees lay beneath their roots. The speculators were wrong in looking for coal but they were right in thinking Bradford's future lay in mining a great underground resource.

With the discovery of oil at Titusville in 1859 speculation began anew, but a mistaken belief that oil lay near the surface resulted in fresh disappointment. Although Bradford's first oil well was drilled in 1871, it was not until 1874, with the advent of improved geological techniques and equipment that would drill deep into the oil rich sand, that Bradford joined the oil boom.

Once accomplished, it was not long before Bradford became known as the "High Grade Oil Metropolis of the World." In 1876, 376 wells produced 380,000 barrels of crude oil. By 1882 there were nearly 3,000 wells producing 18 million barrels and Colonel Little's acres were selling for as much as \$1,000 each. With the coming of the twentieth century the oil boom subsided and



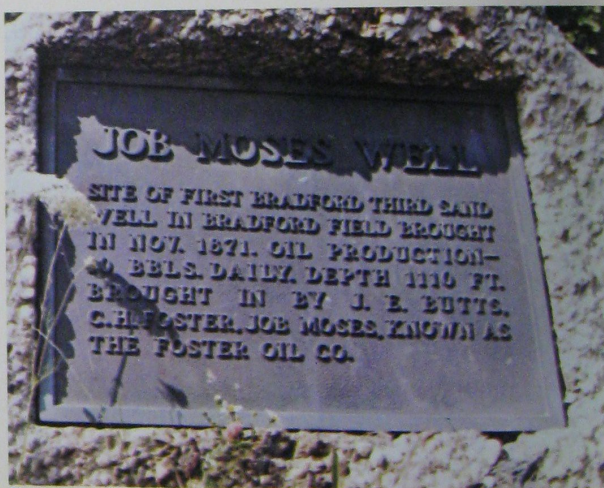
The forest prevails.

the residents of a growing Bradford turned to other occupations. More and more emphasis was placed on diversified industrialization.

Bradford's history is a story of the use of change to encourage growth and permanence. Looking ahead, community leaders have organized countless ideas, plans and target dates for renovation and expansion of the city. In preparing for

tomorrow, Bradford spares no effort in providing opportunities and encouragement for renewal and growth, assuring a prosperous and rewarding life for all of its citizens.

BRADFORD pennsylvania



The beginning of the Bradford Field.

Pioneer in Progressive Government



Government for the people.

The city of Bradford, incorporated in 1879, is governed by a board of seven councilmen. One of the seven is elected mayor by the other councilmen.

The day to day administration of the city is handled by a city manager. Bradford was the first third class city in Pennsylvania to adopt the council-manager form of gov-

ernment in November 1962 after the state legislature okayed optional charter form for local government.

The city maintains full-time paid police and fire departments, two parks, and a half dozen playgrounds, as well as an excellent water system, an incinerator and a land fill program to handle solid waste disposal well into the future. A plan for secondary treatment of sewage has been approved.

The city government has been in the vanguard in the planning and execution of the numerous redevelopment programs that are making a new city of Bradford.

The county government, a three member board of commissioners, is located in Smethport, 20 miles east of Bradford.

The city, county, and surrounding townships, as well as private individuals, cooperate in mutual projects like the recently erected \$60,000 animal shelter and pound. An example of intergovernment cooperation is the Bradford Flood Control project which was completed in 1960 with state and federal assistance to keep the two branches of Tuna Creek within their banks. A Flood Control Authority now maintains the project.



A quiet respite.



FIRST FEDERAL SAVINGS & LOAN ASSOCIATION

The First Federal Savings & Loan Association, serving a 50-mile radius around Bradford, was established in 1917, and was called the McKean County Savings & Loan until 1964. The Association's primary business is Home Loans; however, expert, friendly assistance, in modern surroundings, is offered in Savings Accounts, Money Orders, Travelers Checks, and Christmas Clubs. The slogan "Helping to Build a Better Bradford Area" is supported by functionalism and efficiency.

15 Main Street Telephone 362-3544



I. Milton Craig, C.L.U., Daniel P. Kuzio, C. Kenneth Dixon

BRADFORD ASSOCIATES

Specialists in all forms of insurance — from the simplest accident and health insurance to coordinated corporate programs including risk

management. Phone 368-7161 — ask for Dan Kuzio, Milt Craig or Ken Dixon.

Hooker-Fulton Building

Telephone 368-7161



McCOURT
LABEL COMPANY

For 75 years the McCourt Label Company has served the public as label specialists for the hospital and drug store pharmacists. In recent years the base has been broadened to include pressure sensitive and gummed labels for the industrial and commercial

markets. The McCourt Label Company is known throughout the entire United States, ranging from the smallest corner drug store to some of the giants of industry.

42-54 Bennett Street

Telephone 362-3851

For thirty years David N. Brown & Son have served the Bradford area as Plumbing, Heating and Air Conditioning Contractors.

They serve the public by doing industrial, commercial and residential work and are leaders in all three fields. When you call 362-3525 to report a plumbing or heating problem, your request is answered by a well-trained, highly qualified, registered plumber. For all of your plumbing, heating and air conditioning needs . . . contact **DAVID N. BROWN & SON**



20 Fourth Street
Telephone 362-3525

S. M. GLEASON & COMPANY INC.

S. M. Gleason & Company Inc., organized in 1959 as General Contractors, offers a complete building service starting from the planning stage. Specializing in schools, commercial and industrial buildings, and site development, the company is equipped to handle any size contract within a 100-mile radius of Bradford. Stanley M. Gleason is President, and Francis E. Gleason, Secretary-Treasurer of this competent, reliable company.

Hooker-Fulton Building
Telephone 368-7456



UNIVERSITY OF PITTSBURGH AT BRADFORD

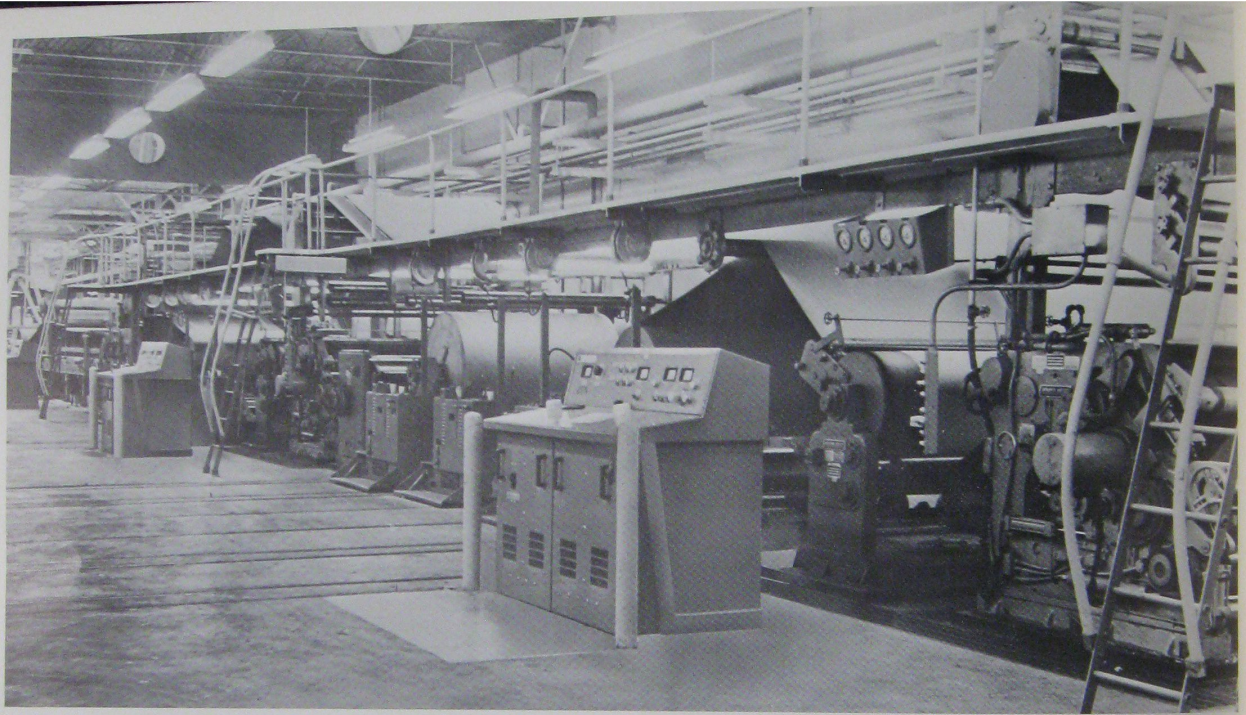


The University of Pittsburgh at Bradford provides fully accredited courses for the first two years of regular college work, after which the students relocate in Pittsburgh or at any accredited college or university. The courses offered are in the College of Arts and Sciences, the School of Engineering, and the School of General Studies. Call the Admissions Office for complete information.
199 Pleasant Street
Telephone 362-3801



BRADFORD LAUNDRY & DRY CLEANING

"Your Clothes Care Authority" is the slogan of Bradford Laundry & Dry Cleaning, established in 1878, and offering, today, the largest service of its kind in McKean County. This service includes alterations, summer and fur storage, and linen supplies, in addition to the regular dry cleaning, laundry and shirt service. Sanitone is used in the cleaning process to help do the best job. Call 368-4121 for free pick up and delivery.
210 Lang Maid Lane
Telephone 368-4121

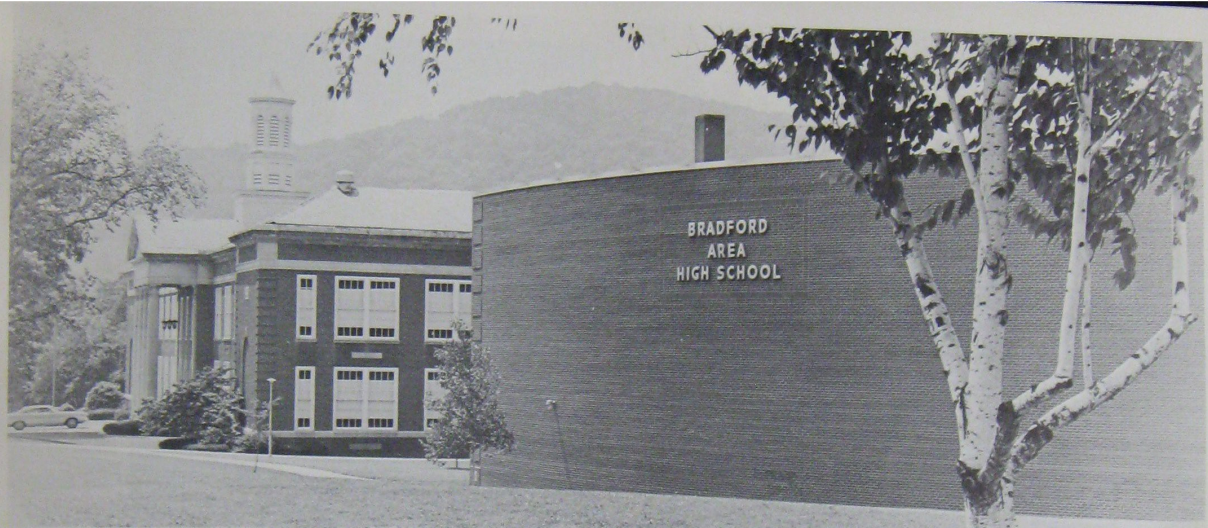


We're glad to be in Bradford!

Great people, fine industrial neighbors, a feeling of pride in the community. It all adds up to why O-I is glad to be in Bradford, serving the corrugated packaging needs of our customers.

Heart of the Owens-Illinois box plant is the high-speed corrugator, a block-long machine that combines medium and linerboard to produce corrugated board.

OWENS-ILLINOIS
FOREST PRODUCTS DIVISION
BRADFORD, PENNSYLVANIA ①



Modern and attractive school facilities provide an atmosphere for total student development.

Student Development



Sports round out the student.

The Bradford Area Schools are committed to providing an educational experience which will enable the individual student to qualify for the highest possible levels of formal education and to achieve to the maximum of his ability. The educative process is viewed as both cumulative and continuous with consideration of the total development of the student.

With an enrollment of about 3,200 elementary and 2,800 secondary school students, the district covers Bradford City, Lewis Run Borough and Bradford, Foster, Lafayette and Corydon Townships, an area of approximately 200 square miles.

Public school plants consist of 13 elementary buildings, a school for trainable children, two junior high

schools and one senior high school. Secondary schools are located in Bradford. The elementary buildings are distributed throughout the district — four in Foster Township, two in Bradford Township, six in the city and one in Lafayette Township.

The newest structure is a junior high school built in 1961. Renovation to the high school with the addition of a new auditorium, gymnasium and a vocational wing was completed in 1965. The second junior high school was expanded in 1964. Most of the elementary schools were enlarged in the 1950's. Plans call for consolidating the elementary facilities into three or four large learning centers.

Accredited by the Middle States



12 *The leisure moments are needed too!*

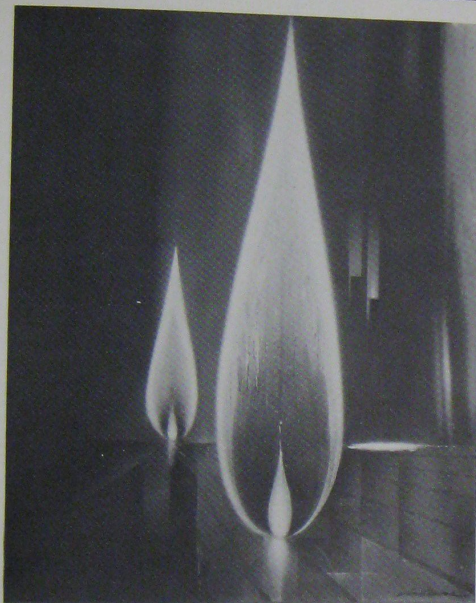
Association, Bradford High School has four regular curricula—academic, business, vocational and general.

The schools use the modern math and concept oriented social science programs developed by the Education Research Council of America. Also used are the AAAS elementary science program and the i.t.a. (initial teaching alphabet) approach to reading.

A modern language program begins in the seventh grade and an ungraded curriculum in language arts is being instituted. Students are given two periods each week to pursue independent study in well-equipped learning laboratories. Extensive use is made of educational television broadcasts and a visual aides center, rated nationally as "distinguished," is located in the high school with satellite centers



Driver training.



In the field of human comfort...as well as industry, no other fuel fills so many needs, so perfectly, so inexpensively as clean, Natural GAS

In the Greater Bradford area, United Natural Gas is privileged to provide this indispensable energy to over 6400 residential, commercial and industrial customers . . . at rates which rank among the nation's lowest.

Commercially and industrially the dependability and economy of United Natural Gas service is a major factor in keeping the Bradford business community successfully competitive nationally.

New Gas Ideas Make the Big Difference. Have a Great Day!

UNITED NATURAL GAS

MEMBER INVESTOR-OWNED NATIONAL FUEL GAS SYSTEM



BECKWITH MACHINERY COMPANY

Beckwith Machinery Company is one of the oldest and largest dealers for Caterpillar Tractor Co. in the United States. We also represent Towmotor, Poclain, Athey, Balderson, Fleco, Hyster, Ulrich, and Rome Plow Company. Since 1907, we have dedicated every facility to seeing that customers get what they want, when they want it, where they want it.

Today Beckwith furnishes equipment, parts and service in Bradford and all of western Pennsylvania. We provide engineering counsel on the proper use of equipment for individual earthmoving and material handling projects. In addition, highly trained mechanics and field servicemen make imme-

diately repairs either at job sites or in our shops.

All these services are provided to key industries including, road construction, site development, mining, logging, pipelining, public utilities, industrial plants and municipal, county and state governmental bodies. In addition to our Bradford facility, services are available at Pittsburgh, Clearfield, Erie, Somerset, Pennsylvania and in Clarksburg, West Virginia.

We are confident that the industries serving the Bradford area will continue to grow and we pledge to continue offering the finest machinery, parts and service available.





**FROM
TIMBER
TO MOULDED
HARDWOOD
PRODUCTS**



PLEXOWOOD is one of the most exciting new industries in Bradford. Through our revolutionary process, we restructure wood to give it added strength and versatility for the now era of mass manufacturing.

PLEX-O-WOOD

A MAJOR COMPONENT OF AVM CORPORATION
HOLLEY AVENUE 814/362-3881



*When it comes to
area development . . .*

Let our specialists help you

We're specialists in area development — and we're ready to assist industrial prospects and communities. Penelec is committed to the role of a "partner in progress" with the over 700 communities it serves, with special emphasis on efforts to assist in the development and execution of programs aimed at sound economic development, attracting new industries, assisting expansion efforts of existing industries and promoting tourism.

As part of these efforts, specially trained members of the Penelec staff help bring information about available industrial sites and buildings to the attention of business decision makers across the nation. This work is supported by national advertising, a computerized Site Service Data Bank and close coordination with local industrial development groups and the State Department of Commerce. When it comes to area development, we're ready to assist you — just call your local Penelec office.

PENNSYLVANIA ELECTRIC COMPANY



A Subsidiary of General Public Utilities Corporation



in each of the other schools.

The vocational technical program makes use of eight separate shops for training in a diversity of skills from auto mechanics to laboratory assistants.

Pilot programs for high school students have been developed around the subjects of nuclear science and great western religious literature.

A special education program reaches students of all ages. A sheltered workshop, operated in cooperation with the McKean County Society for Retarded Children, provides valuable services to the trainable child.

Rounding out the school program are the adult education courses and the summer programs for enrichment and remedial work.

A professional staff of about 350 teachers, counsellors, librarians, home and school visitors, nurses, dentist and doctors carry out the school program.

In addition to the public schools, Bradford has a parochial elementary school and Central Christian High School. New plant facilities were completed in 1962.

Over forty per cent of the high school graduates continue their education, most of them at degree granting institutions.



Central Christian High School was completed in 1962.

Pitt...Twelve Million for the Future

The University of Pittsburgh at Bradford is one of four regional campuses opened by the University of Pittsburgh in the 1960's to extend its service to higher education in Western Pennsylvania.

The Bradford Campus began modestly enough in 1963 with facilities consisting of a former hotel and a one-time hospital building and now is contributing to the remaking of Bradford with a \$12-million college complex on a 110 acre site.

The Bradford Campus offers a cross section of the total educational program of the University, enabling students to complete two years of undergraduate work in the College of Arts and Sciences and the School of Engineering and first two and one-half terms in the School of Nursing. Upon completion of two years of work at the Bradford Campus, students may enter the University's main campus in Pittsburgh or transfer to another four-

year school to complete undergraduate studies.

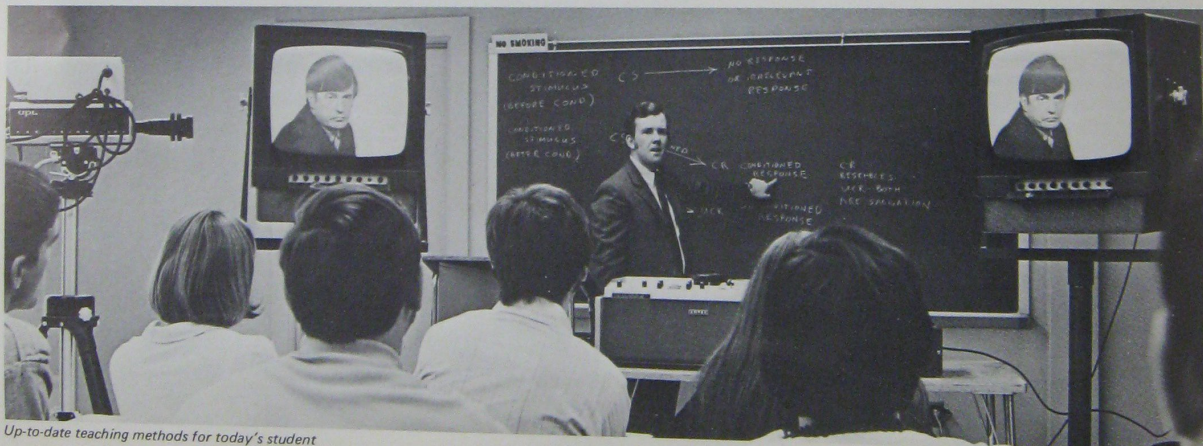
Graduate courses in education and library and information sciences are available in an evening program. The evening school schedule also includes a number of degree and non-degree offerings. Among these are seminars for elected officials and informal lectures.

Enrollment at the campus numbers about 475 full and part-time

students. The faculty numbers about 40.

The former Emery Hotel serves as dormitory and dining room, as well as student lounge and reception center. Most courses are taught at Hamsher House.

In the spring of 1970 a computer was added to augment the campus program in computer science. A full complement of courses ranging from key punching to computer



16 Up-to-date teaching methods for today's student



Founded in 1881, just ten years after oil was discovered in the Bradford Field, Kendall is recognized as a leader in the quality fuel and lubricant fields.

Kendall's reputation for leadership is based on three fundamental facts. First, only the choicest of Pennsylvania crude oils is processed. Refining this world's richest crude gives us an advantage right from the start.

Second, a completely modern refinery utilizing the latest processing techniques produces the finest of lubricant base stocks. These stocks are accurately blended with selected additives to make finished products of uniform quality.

Third, our leadership is maintained by an extensive research program devoted to product development and improvement. The dollars spent for this essential program make it possible for tomorrow's lubrication requirements to be met by today's research.

The company's philosophy has always been to give the customer just a little more value than he expected . . . a product just a little better than he could get elsewhere.

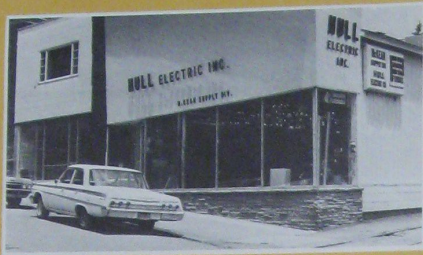


Discover Kendall...enjoy the economy of quality!

KENDALL REFINING COMPANY, Division of Witco Chemical Corporation
BRADFORD, PENNSYLVANIA 16701
"Lubrication specialists since 1881"



HULL ELECTRIC INC.



"Go to Hull - For Anything Electrical" has become a well-known slogan in Bradford. Originating in 1948, Hull Electric has given the best of service to industrial, commercial and residential customers in electrical supplies and as electrical contractors. The McKean

Supply Company is their wholesale division for electrical supplies where materials with the brand names of Micro Switch, Rockwell, Potter & Brumfield, and Superior are available.

118 Kennedy Street

Telephone 368-6118



TAYLOR ROOFING COMPANY

The Taylor Roofing Company can boast of 79 years of good service — "Always on Top" — as their motto proclaims. The high quality work of this company and the superior brand names they carry (Koppers, Carey, and Amax) are well-known in a 75-mile radius

around Bradford. As a special service, representatives of the company will make free estimates on roofing, aluminum siding, eaves trough, and down spout jobs. See the Taylor Company for all your roofing needs.

44 West Washington Street

Telephone 368-8371

JOSEPH MARKS FURNITURE STORE



The Joseph Marks Furniture Store, proud to be the oldest store of its kind in Bradford, has been living up to its motto "Everything for the Home" for 63 years. Always stressing quality rather than price, this store is well-known throughout the area for fine fur-

niture, home furnishings, carpets, appliances, radios, and television sets. In addition, Joseph Marks offers an excellent decorating service and a repair service for the Maytag, Zenith, Hoover, and Admiral appliances sold by them.

24 Main Street

Telephone 368-4315



CITY CREAMERY COMPANY

City Creamery Company, the quality fresh dairy, has served the Bradford area with quality dairy products since 1930. Milk is purchased from nearby farms, processed, and delivered to your door or found at all leading gro-

ceries "farm fresh." City Creamery assures you the freshest and best processed dairy products for your family.

90 Mechanic Street

Telephone 362-6422

languages is offered to both regular students and evening classes.

The new campus is to be built on two parcels of land, one a gift of the Kendall Refining Company, division of Witco Chemical Corporation and the other acquired through an urban redevelopment program. A 32-acre area will be devoted to playing fields, gymnasium, and allied athletic uses; a 78-acre plot to classrooms, dormitories and administration buildings. As the new campus develops, enrollment is expected to rise to between 1,200 and 2,000 students.

St. Bonaventure University, 20 miles north of Bradford at Allegany, N.Y., has long been a source of higher education for Bradford residents.

BRADFORD
pennsylvania



Hotel-dormitory and dining room.



Student lounge and reception center.



Computer science program is popular.

Timber... Oil... Diversity

Bradford, once a lumber town, then an oil town, is now home to a variety of industries producing a broad spectrum of manufactured goods.

The list of products includes machinery, pipes and valves, stone glass and clay products, bricks, cigarette lighters, cutlery, a wide range of electronic components, paper products, charcoal, petroleum and wood products.

The oil and lumber industries no longer dominate the economy but remain important producers. There is one oil refinery and headquarters for three other major oil companies in Bradford. In addition, many companies manufacture equipment for use in petroleum and natural gas production.

Forest related industries are predominantly furniture making and wood working. Slugs for baseball bats and molded products of a wood-resin composite are stamped "Made in Bradford."

The labor force in McKean County consists of 20,000 men and women, about half of whom are employed in the Bradford area. Four Bradford area industries employ more than 500 each. Another half dozen employ 100 or more. Many in-



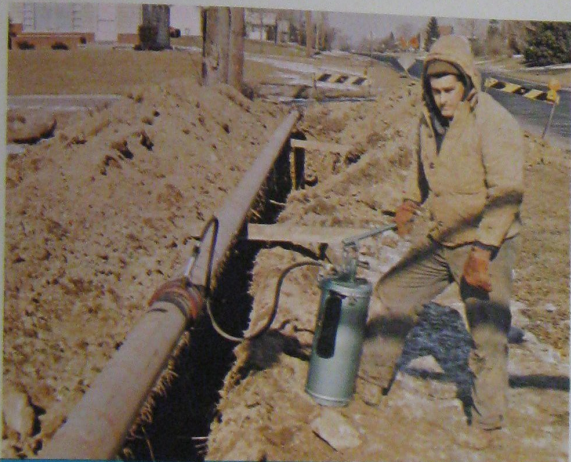
Bradford is the home for one oil refinery and the headquarters for three other major oil companies.

dustries require highly specialized skills and a large portion of the labor force consists of skilled, experienced workers.

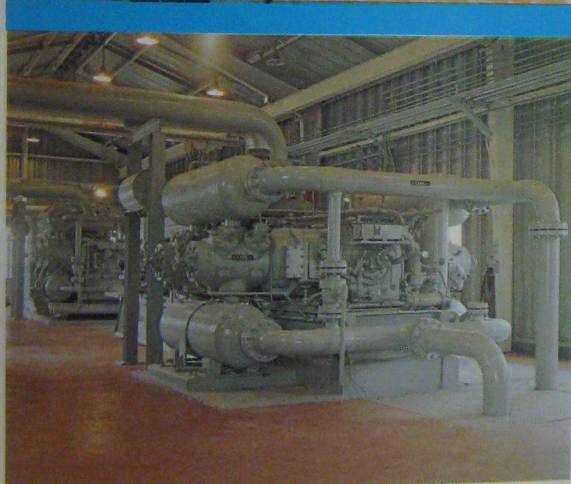
The climate for industrial growth in Bradford is exceptionally good. The adjuncts of a progressive community make it an enviable place to live and work. The Bradford Community Industrial Corporation stands ready to aid new businesses in settling in the area and to help in financing new facilities and plant expansions.



Hand crafted products known around the world.



Dresser "700" POSI-HOLD couplings are used by gas utilities to join gas mains.



Dresser-Clark compressors like this CFC-4 pressurize gas or air for transmission or industrial uses.

DRESSER and Bradford

Bradford occupies a special niche in the makeup of Dresser Industries, Inc. After all, this is where we began . . . back in 1880 producing pipe couplings.

And we've grown some. We still produce pipe couplings and fittings here at Dresser Manufacturing Division.

We've become one of the world's leading builders of pumping and compression systems . . . our Clark Engine-Compressor Division has a plant in Bradford, too.

We're known around the world, too, as a major supplier to the oil and gas industry, as a producer of gasoline pumps and auto hoists, refractories, valves and instruments, cranes and hoists, air and hand tools, and builder of parts for railroad freight cars.

We're still growing. Last year, our sales topped \$700 million. And it all started in Bradford.

DRESSER MANUFACTURING
41 FISHER AVE.

DRESSER-CLARK
36 DAVIS ST.

Divisions of DRESSER INDUSTRIES, INC.

Evolution of a Community



22 Demolition of the old to make way for the future.

Bradford's first settlers, when they decided to leave Vermont, were able to pack up and, leaving their problems behind, go out in search of a new territory and a new start. It was a luxury afforded pioneers in an undeveloped country.

"Moving on" is no longer a feasible solution to problems and the pioneer today, while still searching for new starts, is no longer finding a solution in new territory but in methods of reutilizing the resources at hand.

Bradford is fortunate in having a dynamic program of community development which is making possible a multiplicity of opportunities for renewing the community and enriching the lives of its residents.

Development and implementation of the program is the work, principally, of two agencies. The Redevelopment Authority and the Housing Authority. This work is under the imaginative leadership of the Bradford City government and the guidance of a determined planning Commission.

While the two operate separately, their projects are tied together for an integrated program of community improvements — financed by federal, state, and local monies.

The function of the Redevelop-

ment Authority is the removal of blighted areas by acquiring and clearing land and assembling it in parcels to be sold for private or public development. Bradford is currently involved in seven projects and has received more money in grants per capita than any other city in Pennsylvania.

Four of the projects are receiving Federal assistance. Renewal funds to acquire and prepare land within these four projects will total 6.5-million, which will result in two downtown commercial projects valued at 2.25-million; a public housing program for the elderly and low income families valued at 4.3-million; a moderate income housing project to cost \$800,000 and additional commercial development in the housing project area of approximately \$150,000. The latest project to be undertaken is the Neighborhood Development Program which will provide for a new Post Office, a new library, 60 housing units, additional downtown parking spaces, loans and grants for private housing rehabilitation. This most recent undertaking will have a redevelopment value of 2.2-million dollars.

Two projects are financed solely on the state and local level. These



An academic building that will be part of the Pitt-Bradford Campus Urban Renewal Project.



It's all about people!

Our Bradford Area Story is one of People. Past rapid growth in population created a community. Current continuous appraisal and renewal of our urban environment will assure a future of which we . . . and our children . . . can be proud.

The Bradford Redevelopment & Housing Authorities of the city of Bradford are facing squarely the problems of the past and earnestly endeavoring to renew the community for the future of our people.

Today, from a per capita viewpoint, we are involved in more renewal and housing activities with a greater dollar investment than any City in the Commonwealth of Pennsylvania. Seven urban renewal projects and two housing projects involve eleven and one half million dollars.

Our total community effort is directed to a total community benefit for the future of Bradford's PEOPLE.

BRADFORD REDEVELOPMENT/HOUSING AUTHORITIES

26-28 Pine Street Telephone 814/362-4567



Seventy-two homes for low income families.



This attractive structure will house 129 of Bradford's elderly.



Commercial Center and new motel facilities.

are an area of 32 acres purchased and cleared for part of the Bradford Campus of the University of Pittsburgh and another 18 acre area to be cleared for moderate income housing.

One locally financed project plans for purchase of 100 acres for development of a 30-acre park and housing.

In Bradford the redevelopment effort emphasizes housing, as indicated by the number of projects devoted to that area. Planned in the projects are 800 dwelling units for low to moderate income families and the elderly. The housing units themselves will vary from high rise apartments and prefabricated modular units to individual dwellings. The Bradford Kiwanis Club is acting as non-profit sponsor for one of the projects — a 50-unit apartment complex for moderate income families.

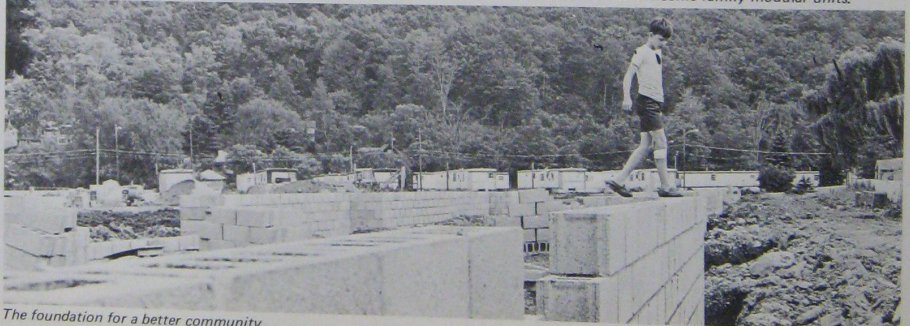
BRADFORD pennsylvania



Congress Street Apartments.



Installation of low income family modular units.



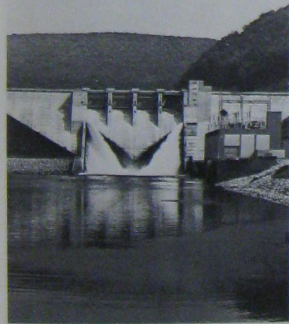
The foundation for a better community.

Mecca for Outdoor Recreation

Bradford lies in the center of a tremendously expanding complex of recreational facilities which provide for enjoyment of every conceivable outdoor activity in every season of the year.

The area has always been known to sportsmen, hunters and outdoorsmen who have come to fish from its crystal streams and stalk the deer or wild turkey in the golden days of late autumn or trudge along the ridges of hills for the single purpose of being alone with nature.

These have now been joined by the increasing number of city dwellers who, feeling the pressure of the city, travel to this region to



The Kinzua Dam.



This dramatic photo taken three miles above the earth graphically shows the magnitude of the Allegheny Reservoir extending 27 miles back of the Kinzua Dam which is seen in the lower left hand corner. In the upper left you can see Lake Erie and beyond it the shore of Canada. Bradford, located immediately to the right of the Reservoir, is only fifteen minutes from the lake.

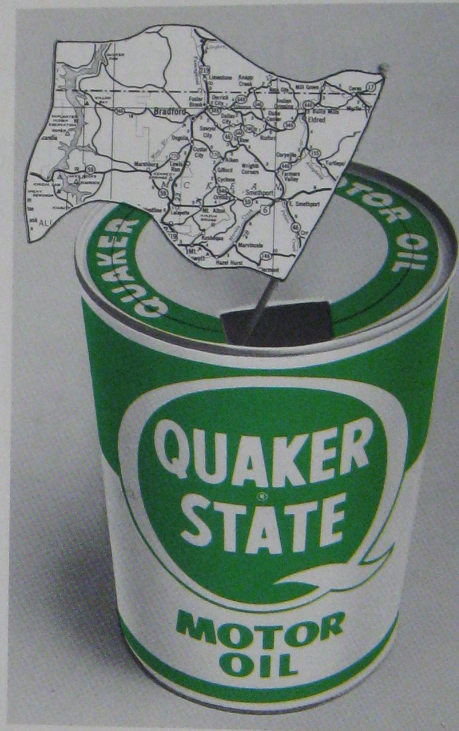
people ...and progress

One of man's oldest basic materials is continually being tailored to meet new applications for better products in science, industry and the home. For more than a quarter century, the Bradford Plant of Corning Glass Works has had an important role in maintaining a position of leadership in the production of electronic components for a variety of scientific and consumer applications. Bradford people and Bradford enthusiasm have helped in the growth of Corning and the community.

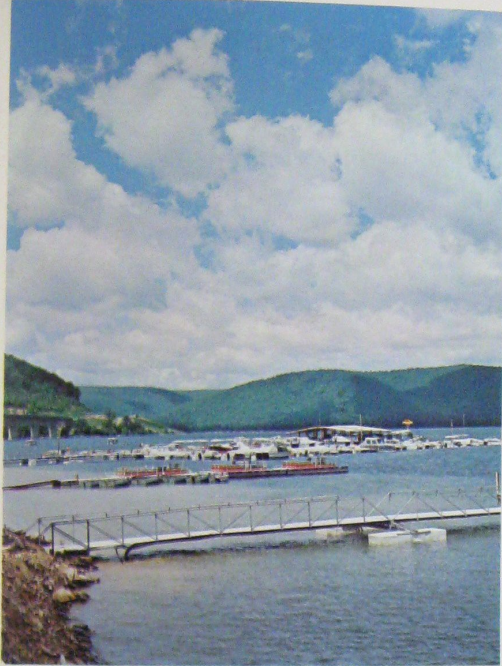
CORNING
CORNING GLASS WORKS



Quality from the ground up!



Every quart of Quaker State Motor Oil is quality from the ground up. Refined from 100% Pure Pennsylvania Grade Crude Oil, Quaker State has the well-earned reputation among the motoring public of being the world's finest engine lubricant. Located only 14 miles southeast of Bradford is the Farmers Valley Refinery, one of the Quaker State Oil Refining Corporation's three modern refining and packaging facilities situated in the famed Pennsylvania Oil Field.



Boating opportunities unlimited.

unwind, to breathe fresh, clean air, to smell the fragrance of pine instead of gas fumes.

The number of annual visitors to the Bradford area jumped into the millions with the completion of the Kinzua Dam and the formation of the Allegheny Reservoir, 27 miles long with 91 miles of forested shoreline.

The reservoir bordering the county on the west includes boat ramps, picnic and swimming areas, campsites and scenic areas with winding



Splendor of fall foliage.



Zippo Professional Golf Tournament.

trails, all operated by the U. S. Forest Service. Of historic note is the burial ground of George Washington's Indian friend, Chief Cornplanter, in the Riverview Cemetery a few miles beyond Willow Bay.

The reservoir is located in the Allegheny National Forest which stretches east toward Bradford — thousands and thousands of acres of forest dotted with developed sites for camping and picnicking and trails for hiking.

To the north on the New York

State border is Allegany State Park, laced with miles of trails and developed with an abundance of campsites, cabins and swimming facilities.

Located in the national forest south of Bradford is the Tionesta Scenic Area, a stand of virgin beech and hemlock giving the visitor an idea of what the forest primeval looked like.

Visitors who have never seen deer except in a zoo are delighted by the frequent sight of a White Tail



30 | Rimrock Overlook of Reservoir and undulating hills.

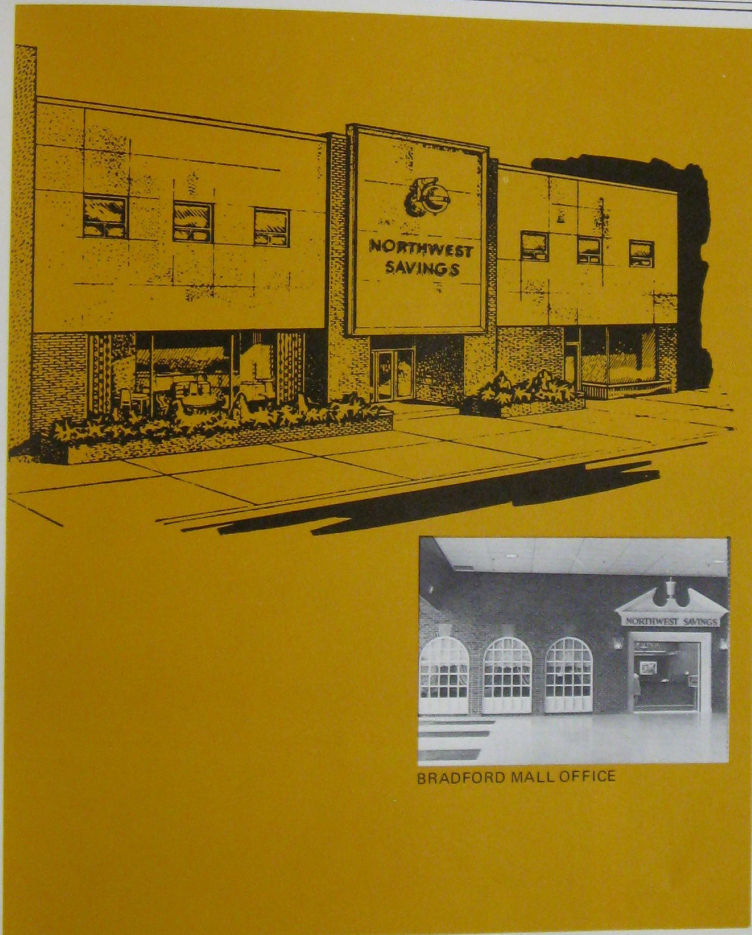
nibbling shoots along the roadside. Another roadside sight familiar to the area is the pumping jack, moving up and down as it raises crude oil to the surface, often in someone's front yard. Those who are interested in seeing what happens to crude oil on its way to becoming gasoline and other petroleum products are welcome for tours of the Kendall Refinery.

Other attractions are the Kinzua railroad bridge at Kushequa, the longest, highest and oldest structure of its type in the state, and the world's last refuge for Lobo Wolves in Kane.

For golfers there are two 18 hole courses in the immediate area and others are within a short driving distance. One of the annual events in the community is the Zippo Professional Golf Tournament; another is the Valley Hunt Club Horse Show.



Winter on the lake.



BRADFORD MALL OFFICE

Northwest Savings Association was incorporated in Bradford in 1896. Now in its 75th year and serving a wide area of Northwest Pennsylvania it operates two offices in Bradford (one in the center of town, the other in the new Bradford Mall) and offices in Warren, Titusville and Johnsonburg.

Northwest Savings multiple thrift programs pay the highest possible rates. Their Mortgage Financing Plans include Home Purchases and Construction financing, along with FHA and VA financing plans.

They have originated Commercial Financing of apartment dwellings, motels and land development. Additional services offered are Special Purposes Club Accounts, Travelers Checks, Money Orders, and Passbook Loans. You will find it a pleasure to deal with the experienced staff in attractive, modern surroundings at Northwest Savings.

NORTHWEST SAVINGS

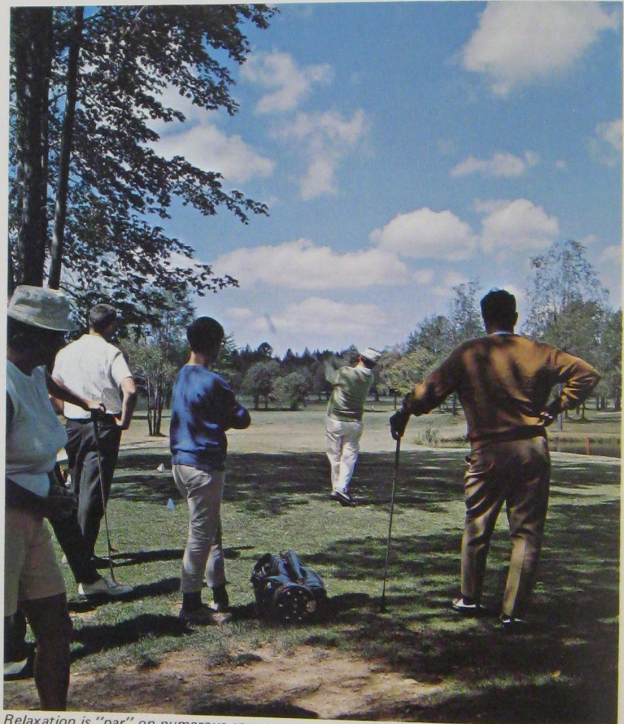


Callahan Park is a 32-acre all season recreation center for Bradford residents — tennis and basketball courts, swimming pool and ball diamonds for spring, summer and fall use; for winter, an ice skating rink and Zippo Ski Slope, a 350 foot vertical drop down a slope of 1,100 feet. A rope tow helps skiers get back to the top. Winter sport enthusiasts are only

a short drive from a number of fine commercially operated ski slopes. Fall also draws a number of visitors to view the gorgeous autumn foliage. The blazing reds, oranges and golds of Bradford's trees are part of the scheduled sights for several fall foliage tours.



32 Bays and inlets provide a place to be alone.



Relaxation is "par" on numerous courses.



In 1895 — "Tuna" was organized to provide Bradford with building materials.

For three quarters of a century we have supplied these needs and built many fine homes and commercial buildings.

Now - our modern store offers these materials and services - remembering the motto of our founders - **SERVICE FIRST -**

QUALITY ALWAYS



TUNA MANUFACTURING CO.

70 Mechanic Street
Telephone 368-6156

HANLEY COMPANY



BRADFORD, PENNSYLVANIA

The Hanley Company is proud of the fact that they have been a part in the growth and development of the Bradford area for eighty years.

THRIFTY CLEANERS

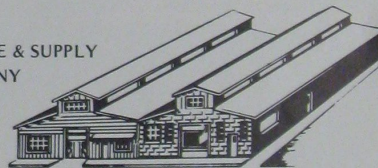
Thrifty Cleaners is proud to be one of the oldest cleaners in Bradford. For thirty-three years they have specialized in dry-cleaning and pressing. Individual attention is given to each garment with Acdo Fashion Finish used on every one. Free pick up and delivery is one of the special services provided. Quality, integrity, and dependability combine with the motto "The Customer is the Boss" to give the public superb service.

18 Chambers Street

Telephone 368-9400



BRADFORD PIPE & SUPPLY COMPANY



Bradford Pipe & Supply Company consistently lives up to its slogan "Service to Our Customers is More Than Just a Word." As suppliers to oil, gas, and industrial industries, they offer products from 162 companies to the customer. The prices of all products are consistent with the manufacturers' published price lists, and where applicable, to trade

discounts prevailing at the time of shipment. "To serve our customers with prompt delivery of quality merchandise at competitive prices" has been the policy of Bradford Pipe & Supply since opening for business in 1961.

140 Chestnut Street

Telephone 368-3143

Outlets for all Creative Talents

Numerous performances by the best of professional artists, writers and thinkers combine with lively programs of artistic participation by the community to enrich the cultural life of Bradford.

The Bradford Civic Music Association, one of the oldest of its type, has been bringing musical artists to perform in Bradford since 1926. The list of performers, top orchestras, soloists, dance and popular music ensembles, is long and impressive. In addition to the Associ-

ation program, the Pittsburgh Symphony Orchestra plays periodically in the city.

Another well-established cultural program is the Civic Lecture series. Recent speakers have included Art Buchwald, Harrison Salisbury and Vincent Price.

Yet another series of programs is presented annually by the Bradford Film Society. The works of Bergman, Truffaut, Fellini and Antonioni are among the offerings. Originally a project of the Sisterhood

of Temple Beth El, the film series is now given in a downtown theater under the auspices of the University of Pittsburgh at Bradford.

The Bradford Campus also contributes to the cultural programs of the community with informal courses and lectures.

The Bradford Art Center encourages local talent and art appreciation with classes, lectures, exhibits and discussions. The Center affords ample room for artists to work and also has a growing library of

art books and magazines.

The Seneca Highland Players, an active amateur theater group, provides entertainment for the community and at the same time gives its members a chance to learn and demonstrate acting skills and talents in other facets of the drama.

The Bradford Landmark Society is dedicated to preserving monuments to the area's exciting past. Part of the organization's program has been tours of historic houses. Bradford is also home to the fa-



The Buffalo Symphony Orchestra delights the people of Bradford.

mous art collection of T. E. Hanley. Much of the collection now graces art museums from coast to coast. The Carnegie Library of Bradford serves the reading needs of the community with a collection of 43,500 volumes and 150 periodi-

cals and newspapers. The library also has a collection of film strips and phonograph records for use by its patrons and a complete file of the local daily newspaper is kept on microfilm.

Programs at the library include 16



Seneca Highland Players perform.

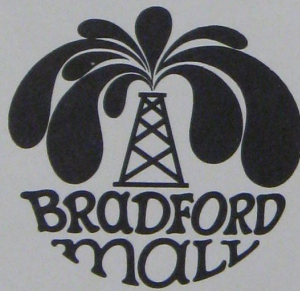


Bradford Art Center encourages talent and appreciation.

EVERY ROAD LEADS TO THE BRADFORD MALL



- BIGGS HARDWARE
- BRADFORD NATIONAL BANK
- CADET DRY CLEANERS
- GALLENCAMP SHOES
- JO-ANN FABRIC SHOP
- LOBLAWS SUPER MARKET
- NORTHWEST SAVINGS
- OAKLEAF HALLMARK CARDS
- PARKLANE HOSIERY DEPT.
- J. C. PENNEY CO.
- REA & DERRICK DRUGS
- ROYCE SHOES
- SHAKE 'N' DOG
- SINGERS
- SUZY BOUTIQUE
- WOOLWORTHS



The completely enclosed Bradford Mall offers: air conditioned comfort; free parking for 1,600 cars; convenient hours, open 10 A.M. to 10 P.M. daily and closed Sundays; and a fine selection of merchandise and services.

BRADFORD MALL ON ROUTE 219

EAST BRADFORD, PENNSYLVANIA

millimeter film presentations and a summer reading program for children. Films are also available to organizations seeking them for program material.

The library has a 4,500 volume collection donated by T. E. Hanley and a representative collection of painting and sculpture donated by the art collector.

A total of 9,627 patrons borrow an average of 103,000 books annually. Plans include the hope of a new library building in one of the city's redevelopment projects. Chautauqua Institution, which offers a full summer cultural program, is less than an hour's drive away.



The inquiring mind.



Heritage Days' headquarters for the Bradford Landmark Society.

Hippocrates' People

Meeting the medical needs of the area is Bradford Hospital, an up-to-date 223 bed, general institution following all the regulations of the Joint Commission on Accreditation of Hospitals.

The hospital building, a space age design constructed completely of aluminum in 1950, was the first hospital architecture of its type in the nation.

Equally as modern as the facility is the service provided within by the excellent professional staff. This includes four surgeons, three internists, eight generalists — three of whom are internists, two obstetrician-gynecologists, two radiologists, a pathologist, a urologist, a pediatrician, an anesthesiologist, an eye, ear, nose and throat specialist, and two consulting psychiatrists.

Among the hospital's fine facilities is a completely equipped four-bed

coronary care unit staffed around the clock by nurses with special training in coronary cases.

Bradford hospital places emphasis on continued education of its staff to keep abreast of advances in medical knowledge. Doctors participate in the telephone lecture network of the Western New York

Regional Medical Program and a videotape machine and monitor in the hospital library give access to a nationwide library of tape programs.

With the growth of the area, the hospital is expanding its physical and inhalation therapy and X-ray departments.

A clinic operated in close cooperation with the hospital is a source of care for crippled children and expectant mothers as well as patients with cancer, cardiac, and psychiatric problems.

Ambulance service in Bradford is provided through the fire department.

BRADFORD
pennsylvania



Bradford Hospital . . . meeting the medical needs of the area.



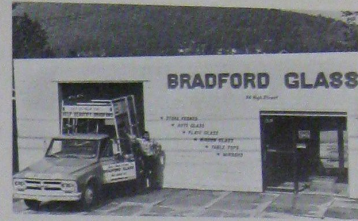


FOREST OIL CORPORATION
Fifty-five years ago the Forest Oil Corporation was founded in Bradford. Since then this successful organization has grown and expanded until it has branches in

several other parts of the country including Denver and San Antonio. The Bradford office remains the central office for Forest Oil, producers of oil products.

78 Main Street Telephone 368-7171

BRADFORD GLASS



In business only two years, Bradford Glass has already established an excellent reputation as sellers and installers of many varieties of glass products. These include mirrors (ready made or cut to size and pattern), plate glass, windshields, all types of

auto glass, table tops, storm windows and doors, aquariums, and Kawneer commercial aluminum entrances. Their special services include store front work and commercial glazing.

94 High Street Telephone 362-7746

RUDOLPH C. NELSON AGENCY

The Rudolph C. Nelson Insurance Agency, located in the Hinckley Building, has been writing insurance since 1936. The General Accident Group, the Royal-Globe Insurance Group, the Western Surety Company, and the Ohio National Life Insurance Company are represented by the firm. In addition, the services of Pennsylvania and New York State Brokers and a Notary Public are provided. Rudolph C. Nelson, Walter H. Schilg, Emily Ostberg,



Gift Storms, and Jeanne Walker are well-qualified to serve as "Your Agent for All Kinds of Insurance."

4 Chestnut Street
Telephone 368-6816 and 368-6421

ASH SHOE STORE



Emphasizing Quality Merchandise, Proper Fit and Friendly Service, the Ash Shoe Store has served the Bradford area for twenty years. The customer has a variety of brand names to choose from — Florsheim, Naturalizer, Life Stride, Miss America, Town and Country,

Hush Puppies, Roblee, Pedwin, Buster Brown, and U.S. Keds for the entire family. You'll enjoy shopping at Ash Shoe Store for quality shoes, handbags, slippers and hosiery.

25 Main Street Telephone 368-9536



**CARL E. SWANSON
& SONS, INC.**

Commercial and industrial construction is a specialty of Carl E. Swanson & Sons who have established an enviable reputation in the trade during their fifty year history. In addition to their construction service, they carry a complete line of building supplies for sale or for rent. Everything's up-to-date at Carl E. Swanson & Sons — proud of their long and expert service to the Bradford area.

Mill at Hilton Telephone 368-6106



**EUGENE S. ALECI,
JEWELER**

Bradford's most modern and beautiful jewelry store was founded over fifty years ago. This store has the most experienced personnel as well as the most complete facilities to render services related to the Jewelry Industry: repairing of watches and clocks, designing

of rings, setting of precious gems such as diamonds, and the engraving of silver dishes and trophies. Here you find quality and gifts that last.

Main and Chestnut

Telephone 368-3302



**BRADFORD
PRINTING COMPANY**

Big enough for its printed products to reach across the nation and small enough to have the personal touch of the country printer — that's Bradford Printing Company, a full service printer for the area's leading industrial firms, publishers and universities.

The plant employs 30 people.

142 W. Washington Street
Telephone 362-3876

**SAL'S
MARKET**



You're treated Royally at SAL'S

THE MOST MODERN SUPER MARKET

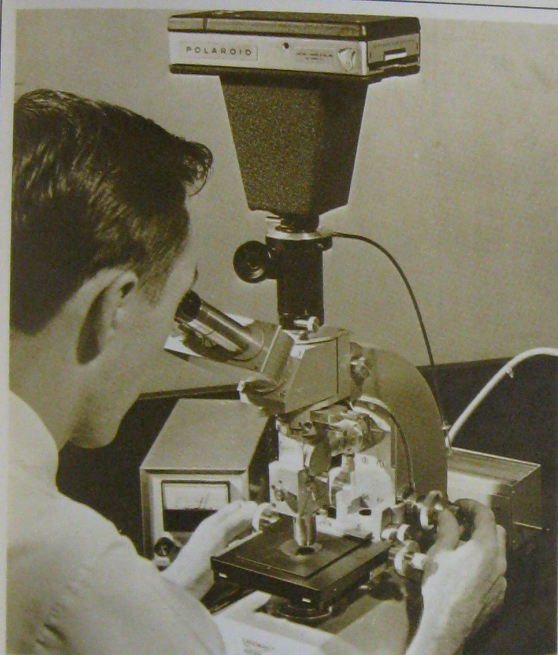
in the city of BRADFORD, PA.

(With The Finest Of Carry-Out Service)

Open 10 a.m. to 2 a.m., 16 hours of convenient shopping

7 Days a Week

101 Barbour Street Telephone 368-9911



MATERIALS DIVISION

manufactures
and markets
single crystal
semiconductor
materials
primarily for
use in solid
state electronic
devices.



CONTROLS DIVISION

designs and manufactures radio
remote control systems used
in operating industrial equipment.

Ventron

20 Leon Street Telephone 362-3586

Active People... Better Community

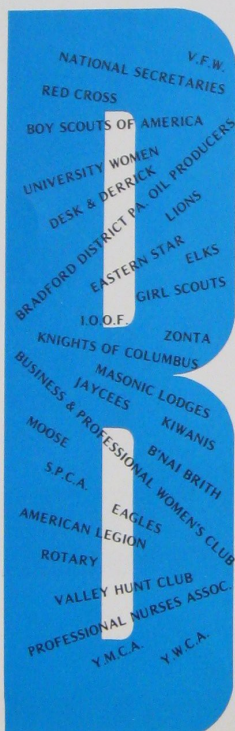
The numerous clubs of Bradford provide its citizens with opportunities for fellowship and participation in programs to better the community.

A partial list of service, veteran's and fraternal organizations for men and women include Kiwanis, Rotary, Lions, Zonta, Veterans of Foreign Wars, American Legion, Elks, Moose, Knights of Columbus, Eastern Star, Odd Fellows, Masons, and Jaycees. There are many others.

In addition to their social programs, clubs and organizations provide backing and manpower for projects of various sorts.

The YMCA and YWCA have special appeal to members of all ages with a wide range of recreational and educational programs.

The YMCA recently replaced its old facility, built in 1906, with a million dollar plant which boasts a swimming pool, gymnasium, handball and squash courts, exercise rooms and a health club featuring steam room and sauna and massage equipment. In addition there are a number of game, meeting, reading and television rooms. The YMCA has a large and active membership and has also extended use of its facilities to the Bradford Campus of the University of Pittsburgh.

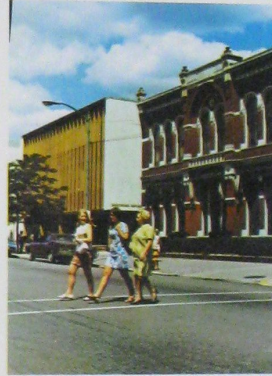


A million dollar YMCA.

Where Shopping is a Pleasure



The joy of shopping.



Downtown convenience.



A wide selection.

The shopper in Bradford can count on two very important considerations — parking close to the store and a wide selection of quality merchandise to guarantee getting what is wanted rather than taking just what is available.

The one stop shopper who goes to the Bradford Mall or the person who likes to go from store to store in the more traditional downtown shopping area can select from nationally advertised brands in food, clothing and other goods. City operated parking lots accommodating 250 cars, and on-street parking put stores just steps away whatever the personal preference. The mall covers an area of more than 200,000 square feet with parking for 1,205 cars. A large discount department store is located in a redeveloped downtown site.

Visitors seeking overnight accommodations have their choice of six motels and hotels with a total of more than 300 rooms.

Serving the financial needs are two commercial and two savings banks in addition to several finance companies.



R. C. CAN DIVISION, BOISE CASCADE CORPORATION

Composite cans are the major product of the R. C. Can Division of Boise Cascade Corporation. All 22 plants operate similarly to the one located in Bradford, using paper, foil, plastic, and metal laminates to produce spirally wound containers. These cans have metal ends and are used for the packaging of refrigerated dough, motor oil, frozen juice concentrates, and dozens of other products. Only the one-quart motor oil cans are manufactured at the Bradford plant, located near the new Bradford Mall.

105 Bolivar Drive Telephone 362-3861

BRADFORD MILK COMPANY, INC.

Serving Bradco dairy products to area residents since 1934.

44 State Street
Telephone 368-4136



TOP LINE CORPORATION

Designers, manufacturers and distributors of materials handling equipment for the dairy industry.

BRADFORD, PENNSYLVANIA - JANESVILLE, WISCONSIN
Telephone 814/362-4626 and 608/752-7900

The Bradford Era

Now in its 94th year of service, The Bradford Era serves Bradford and the area with a daily news and picture report noted for its completeness and accuracy. The Era has more circulation than that of all other McKean County papers combined. Proud of its tradition and that of the Bradford Area, The Era looks forward to the fine future of this dynamic region.

43 Main Street Telephone 368-3173

1490KC **WESB** 1490KC

The pioneer radio voice of McKean County, Radio Station WESB serves the area with diversified programming, highlighted by area and world news, sports, music and features. WESB is proud of

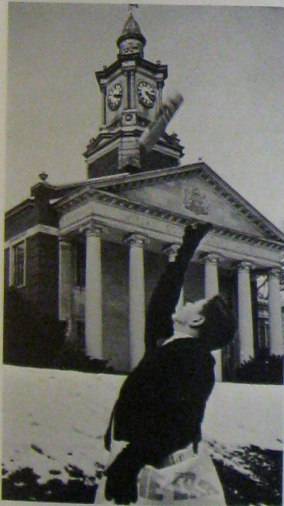
its audience, having the greatest percentage of listeners in its home county of any radio station in Pennsylvania.

Bradford, Pa. Telephone 368-4141

In Touch with the World

Bradford is served by a sophisticated network of communications and transportation which puts the city in contact with any spot on the globe.

The Bradford Regional Airport, served with a daily schedule of flights by Allegheny Airlines, takes the air traveler into the center of such cities as New York, Pittsburgh,



Informing the county and beyond.

and Philadelphia more rapidly than many daily commuters to those cities can drive there.

Mile-a-minute superhighways are close by. Route 219, the north-south route on which Bradford is located, is being improved to a four-lane road from Buffalo, N.Y., to West Virginia. A \$10-million project is now under way relocating the road where it passes through Bradford. South of Bradford is the east-west Interstate 80 and a short distance to the north, the soon to be completed New York Route 17.

Intercity passenger service is provided by three bus lines. Freight service is available from two railroads and eight trucking firms.

Pennsylvania Electric Company, United Natural Gas Company, Columbia Gas of Pennsylvania and Bell Telephone of Pennsylvania provide utilities.

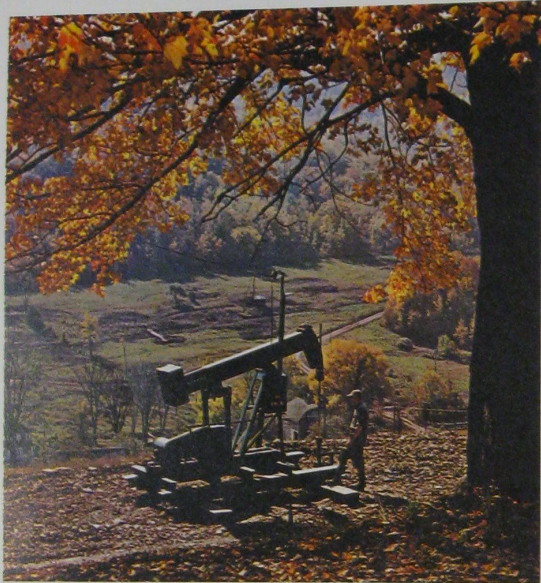
News and entertainment are given by a morning daily newspaper, a weekly newspaper, a radio station, and ten television channels on a cable, a direct link to New York, Buffalo, and Erie among other cities.



Bradford Regional Airport.



U.S. Route 219 . . . a major north-south expressway for the future.



Bradford is a strategic city in the crude oil production sphere of Pennzoil United's elevating resource operations. At some 6,000 barrels daily, Pennzoil remains the largest Penn Grade crude oil producer. This supply furnishes crude oil to three refineries that manufacture renowned Pennzoil Motor Oil. To provide a continued supply of Penn Grade crude, Pennzoil United is actively engaged in the investigation of new methods for oil recovery through production research.

Pennzoil United, having been in the Penn Grade picture for many years, today explores for oil and gas in various

other areas of North America, also South America, the North Sea, England, and Indonesia.

United Gas Pipe Line Company, a wholly-owned subsidiary, handles almost ten percent of the natural gas consumed in the United States.

Through Duval Corporation, Pennzoil United has escalated its position as a major Free World Producer of strategic metals and minerals.

Houston, Texas headquarters is the home of these natural resource activities, but to the Company, Bradford is also home.

PENNZOIL UNITED, INC., THE NATURAL RESOURCE COMPANY

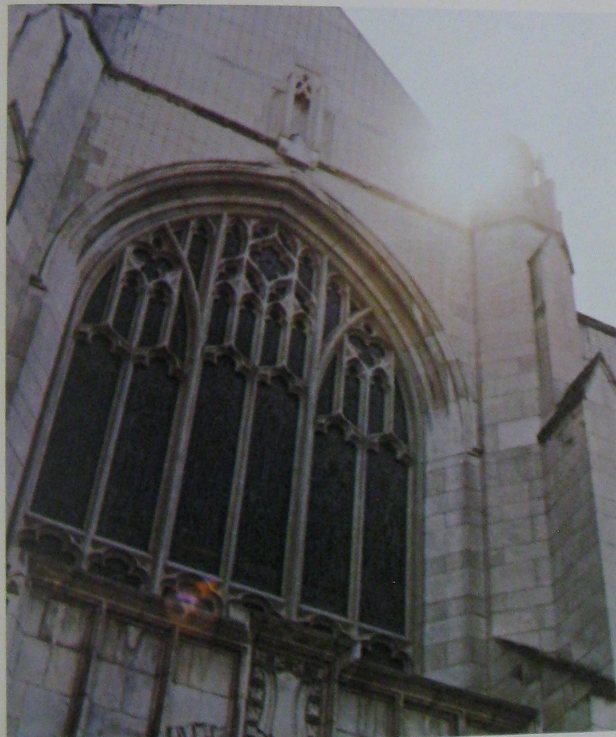
Established in 1926, the Producers Bank today has four offices, three in Bradford, one in Smethport. McKean County has benefited by the bank's innovations in many fields. For example, this bank was the first to have an installment loan department, drive-in banking facilities, modern proof machine operation, electronic bookkeeping machines, school savings accounts, thrifty-check checking accounts, and an internationally accepted bank credit card (Master Charge). This is the true pioneer bank of Bradford, the bank that lives up to its reputation of efficiency, professional staff, and modern standards — The Producers Bank.

Producers Bank

**A FULL
SERVICE
BANK**

56 Main Street 368-3103
671 East Main Street 362-5549
587 South Avenue 362-3579
Smethport, Pa. 887-5522

Churches...Working Together

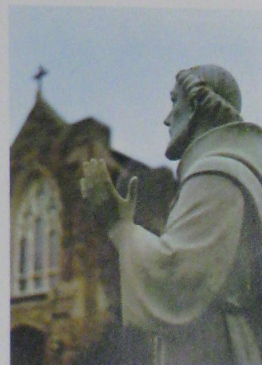


Religious faith has always been evident in the community spirit of Bradford.

The earliest settlers were of the Baptist faith. It has been related that in the spring before the raftsmen began their long journey to Pittsburgh, the good citizens of Bradford, believing the risk to life and limb in physical danger was enough without inviting spiritual peril, insisted they be baptized. The ceremony was duly scheduled for the Sunday before departure.

By 1875 there were ten churches in Bradford and today that number has grown to 36 Protestant churches, three Roman Catholic churches, and a synagogue. They all work together toward common goals through a council of churches. Individually the churches work toward the improvement of the community through programs for youth and adults.

BRADFORD
pennsylvania



Statistics

GEOGRAPHIC:

Bradford is located in northwest Pennsylvania near the New York State line, 79 miles south of Buffalo and 157 miles north of Pittsburgh. Route 219 is the main north-south route through the city.

Altitude:
1443 feet above sea level

Climate:
Average temperature for January is 28° and average July temperature is 71°.

Precipitation:
Average annual 45 inches

POPULATION:

City:
15,000 (Est. 1969)
Metropolitan Area:
30,000 (Est. 1969)

EDUCATION:

Bradford Area School System has one high school, two junior high schools and fourteen elementary schools. The Parochial system has a high school and elementary school.

The University of Pittsburgh at Bradford provides the first two years of college credit courses, and graduate courses at the Master's level.

LOCAL GOVERNMENT:

Council-Manager — Mayor and council elected by citizens. Manager supervises daily operation.

Fire and Police Department — Staffed by full-time paid civil service employees.

HEALTH SERVICES:

Bradford Hospital: 223 beds
3 Nursing Homes

UTILITIES:

Electricity — Pennsylvania Electric Company

Natural Gas — United Natural Gas Company & Columbia Gas of Pennsylvania

Telephone — Bell Telephone Company of Pennsylvania

Water — Bradford Water Authority. The city's three reservoirs hold more than a billion gallons of high-quality water.

Sanitation — Bradford Sanitary Authority. A modern two-million-dollar sewage treatment and refuse facility.

TRANSPORTATION:

Railroads:
Baltimore & Ohio
Erie-Lackawanna

Motor Freight:
Eight major lines

Bus Lines:
Blue Bird Coach Lines
Edwards Motor Transit, Inc.
Seaway Coach Lines

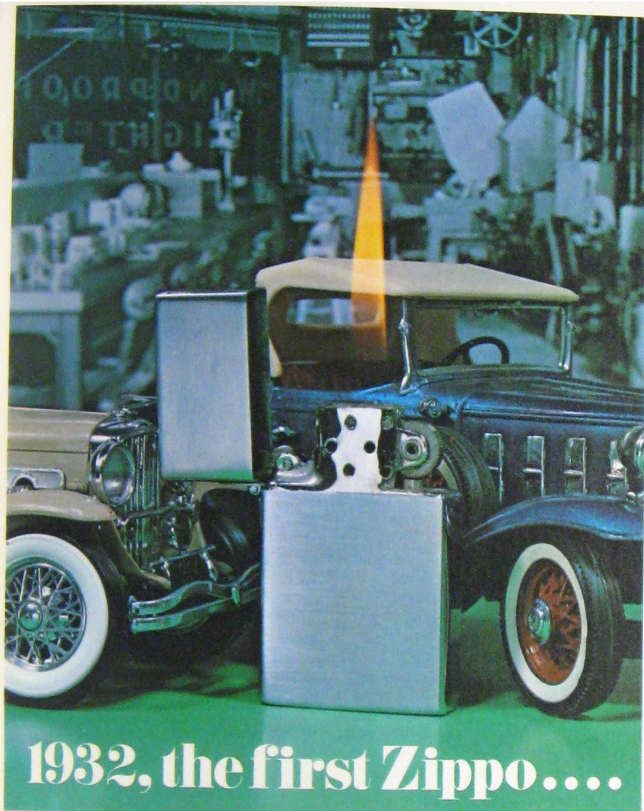
Airport:
Bradford Regional Airport



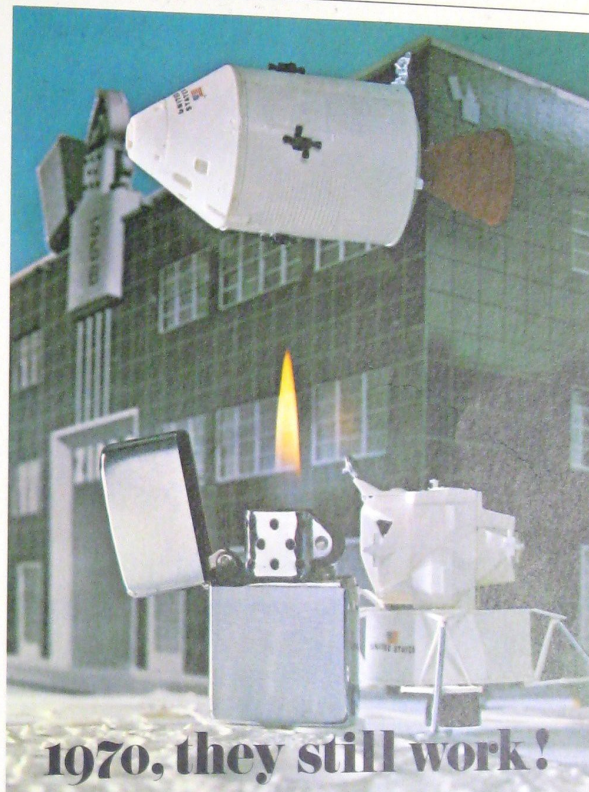
This "community image" book was created and produced for The Bradford Area Chamber of Commerce by —

TRANTER & DILKS
Public Relations and Advertising
Warren, Pennsylvania

Photographic Sources — Bradford Area Chamber of Commerce; Bradford Era; Bradford Redevelopment and Housing Authorities; Gary Lester of Tranter & Dilks; Model Cities Agency; Northwest Savings Association; Pennsylvania Department of Transportation; R. L. Sharp; W. Forres Stewart; U. S. Forest Service.



1932, the first Zippo....

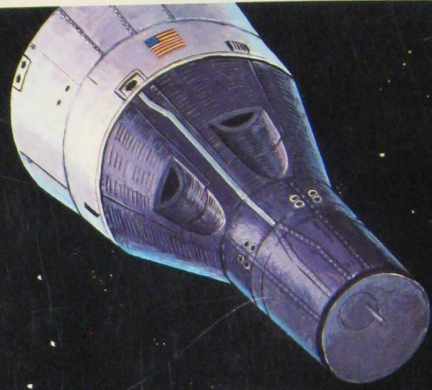


1970, they still work!

Give the windproof Zippo - it works or we fix it free

ZIPPO MANUFACTURING COMPANY-BRADFORD, PENNSYLVANIA 16701 IN CANADA: ZIPPO MANUFACTURING COMPANY OF CANADA LTD., NIAGARA FALLS, ONTARIO

*The
World's Finest
Cutlery*



*...now in
space*



W. R. CASE & SONS CUTLERY COMPANY

BRADFORD, PA. • SUBSIDIARIES: CASE SHEAR CORP., CASE NASHVILLE CORP., NASHVILLE, ARK.